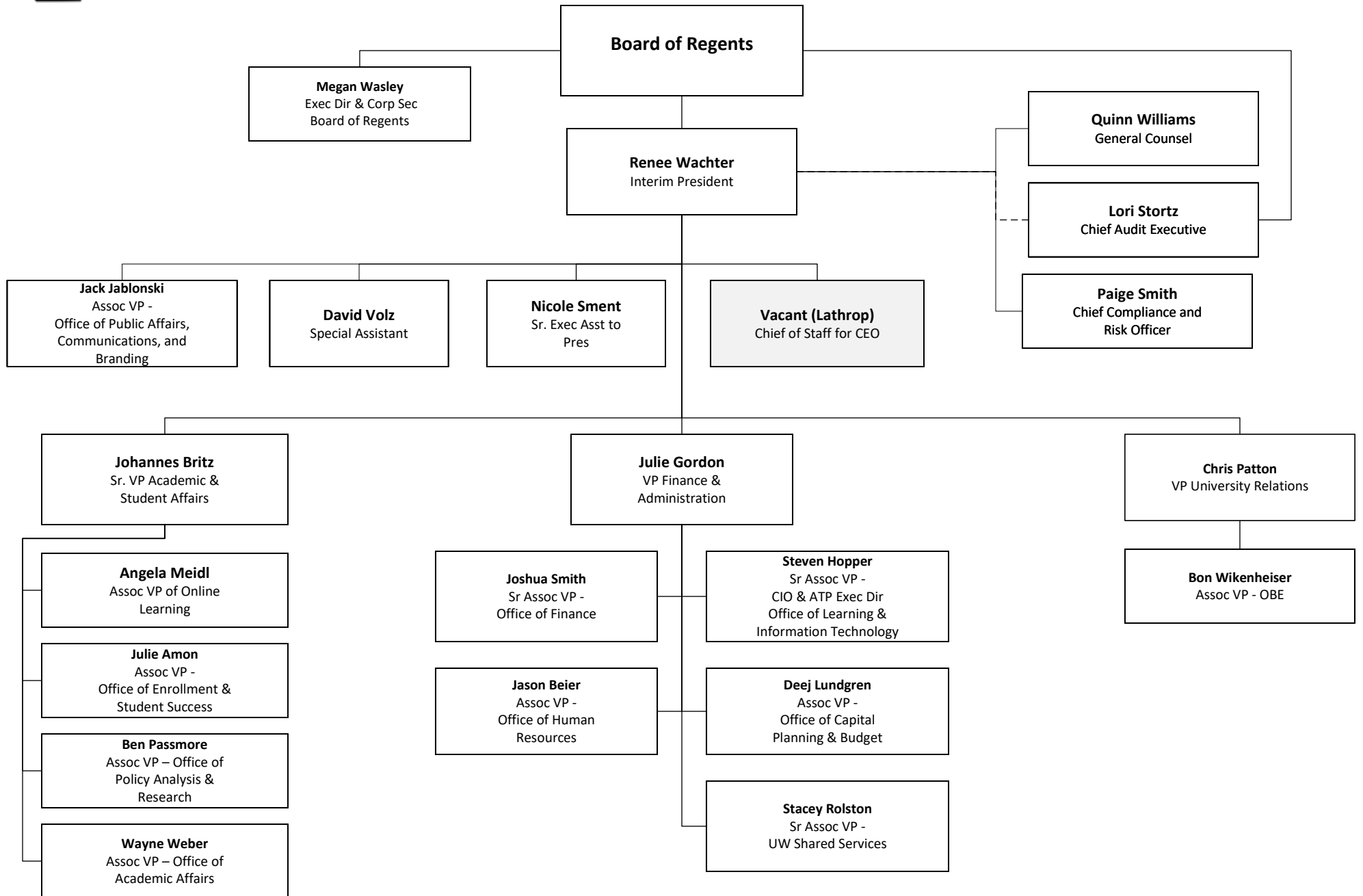
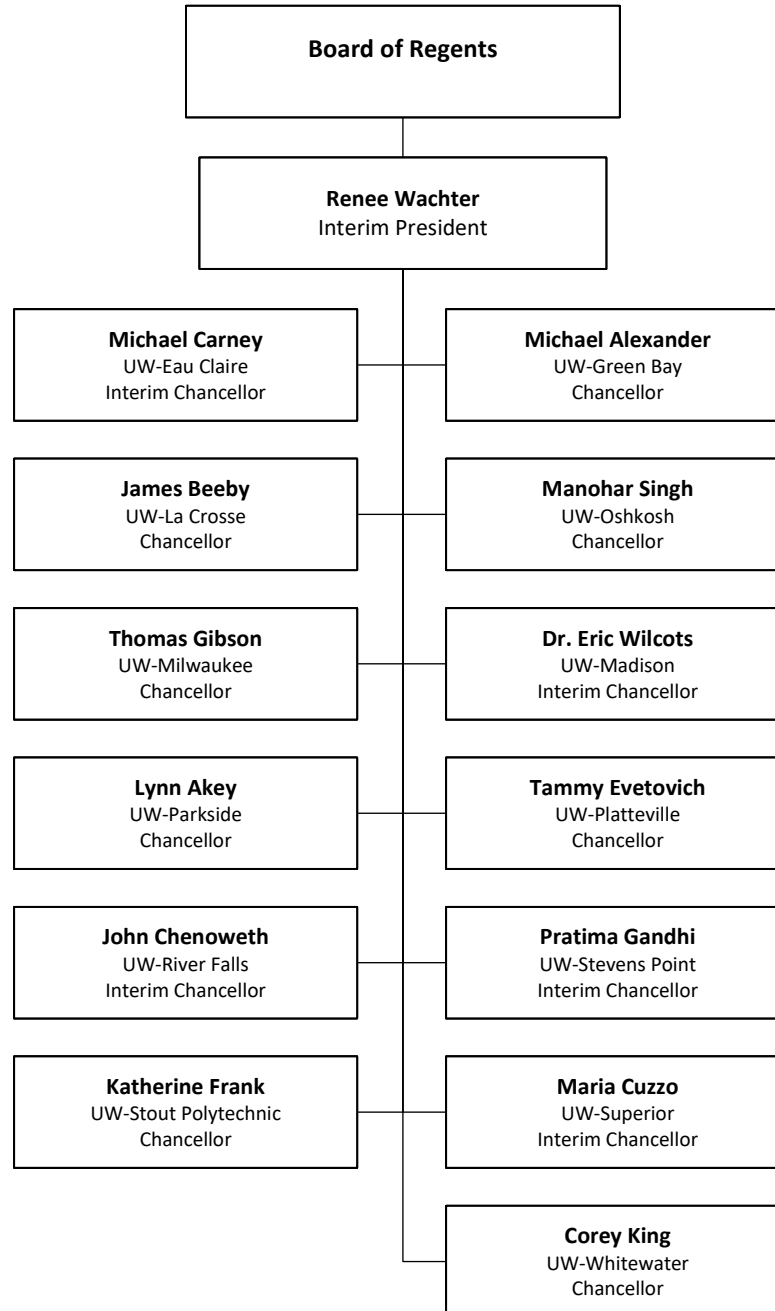


## Executive Leadership



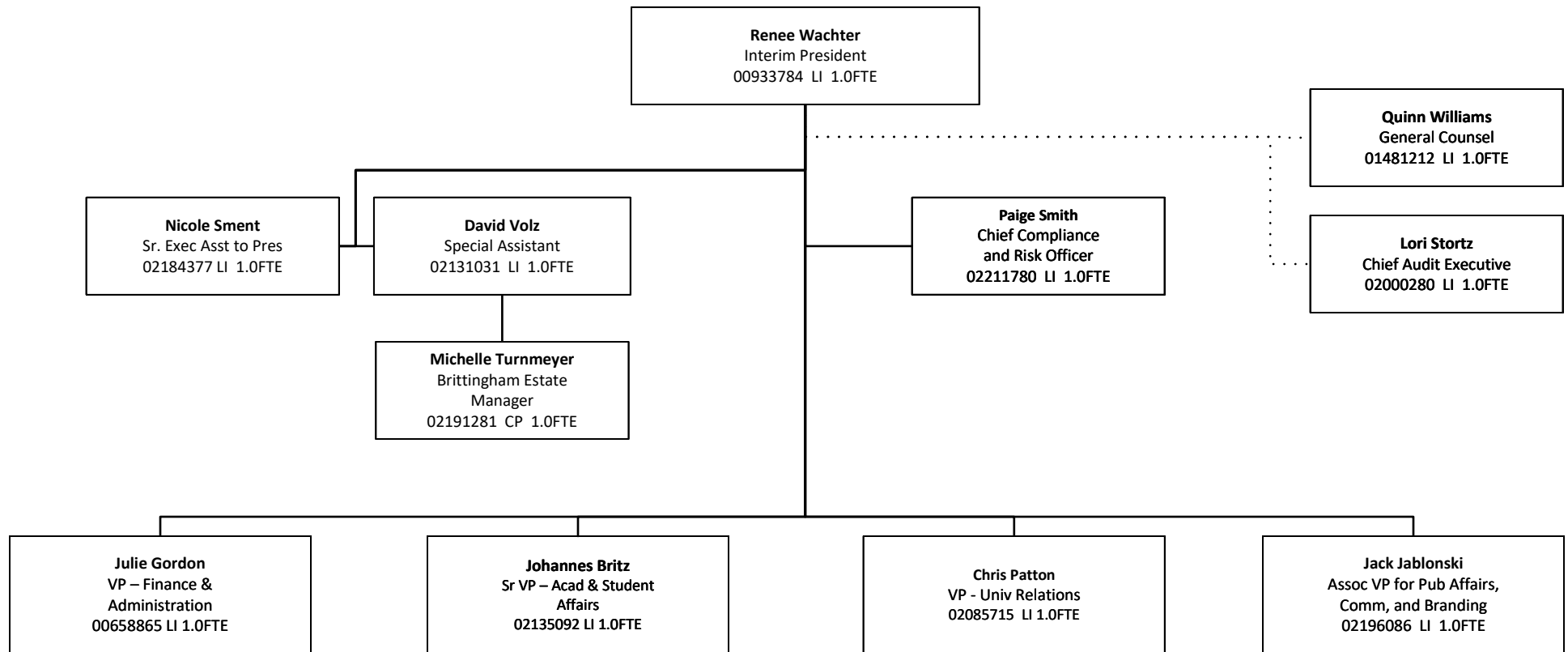
# Universities of Wisconsin

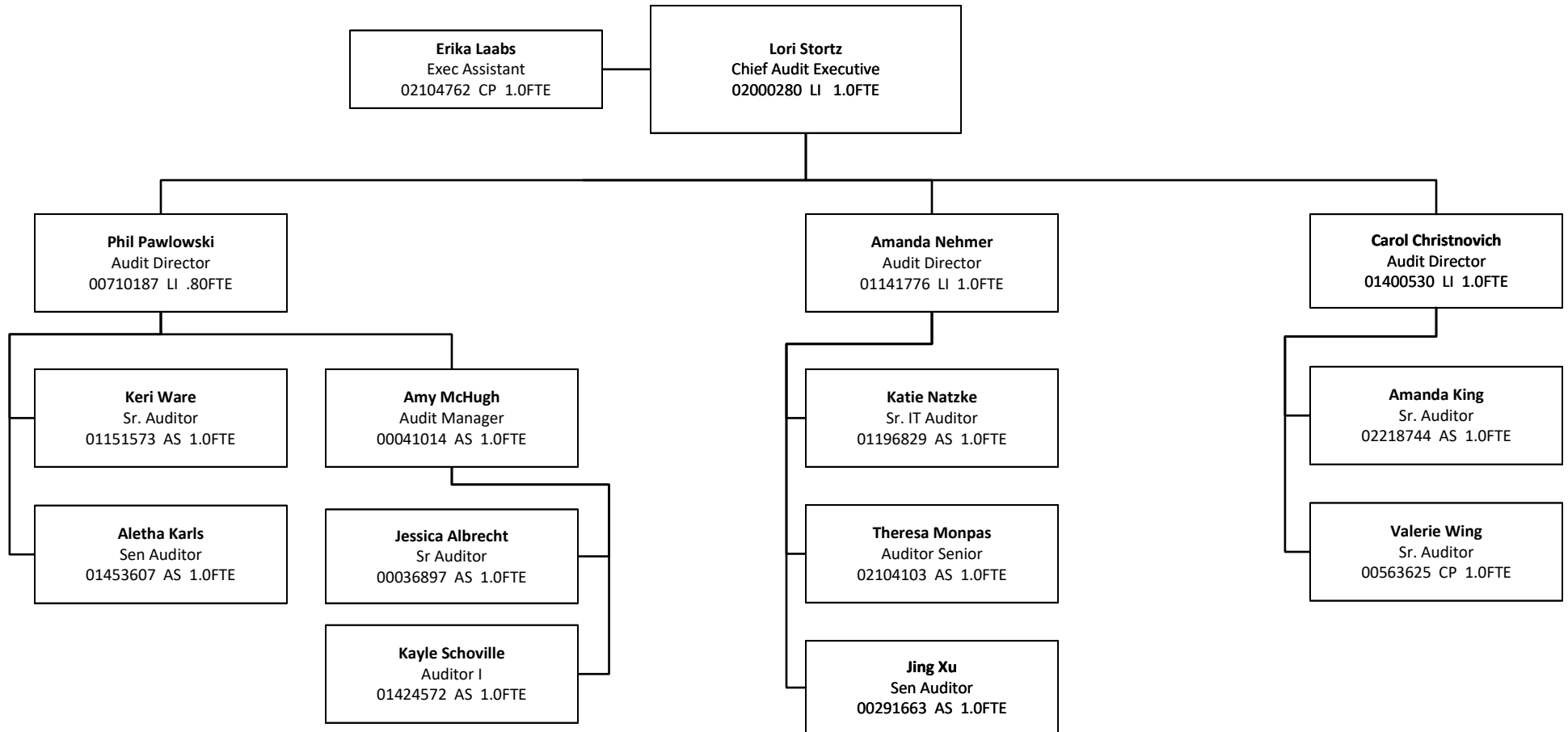
## Universities of Wisconsin Chancellors



# Universities of Wisconsin

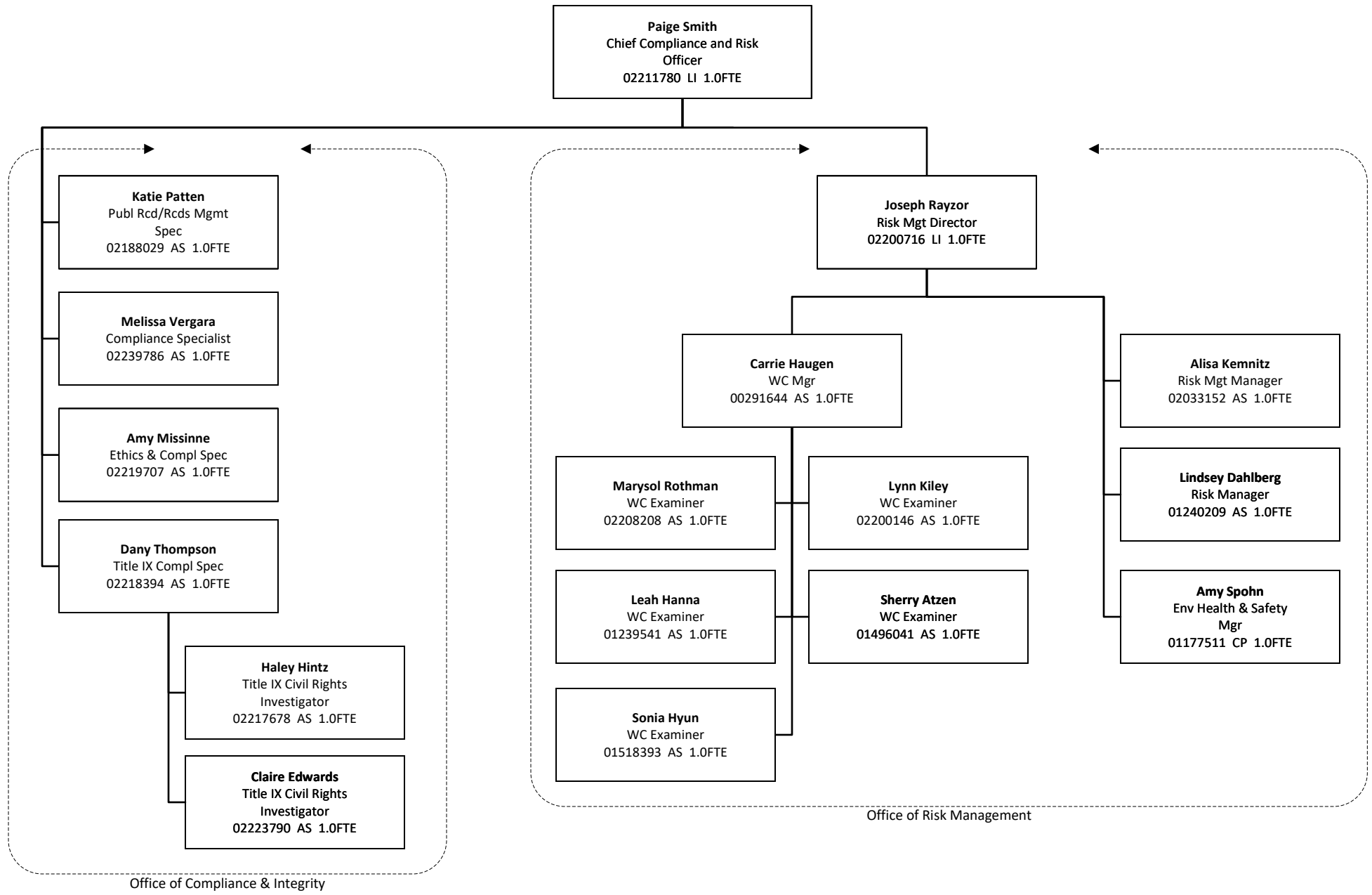
## Office of the President





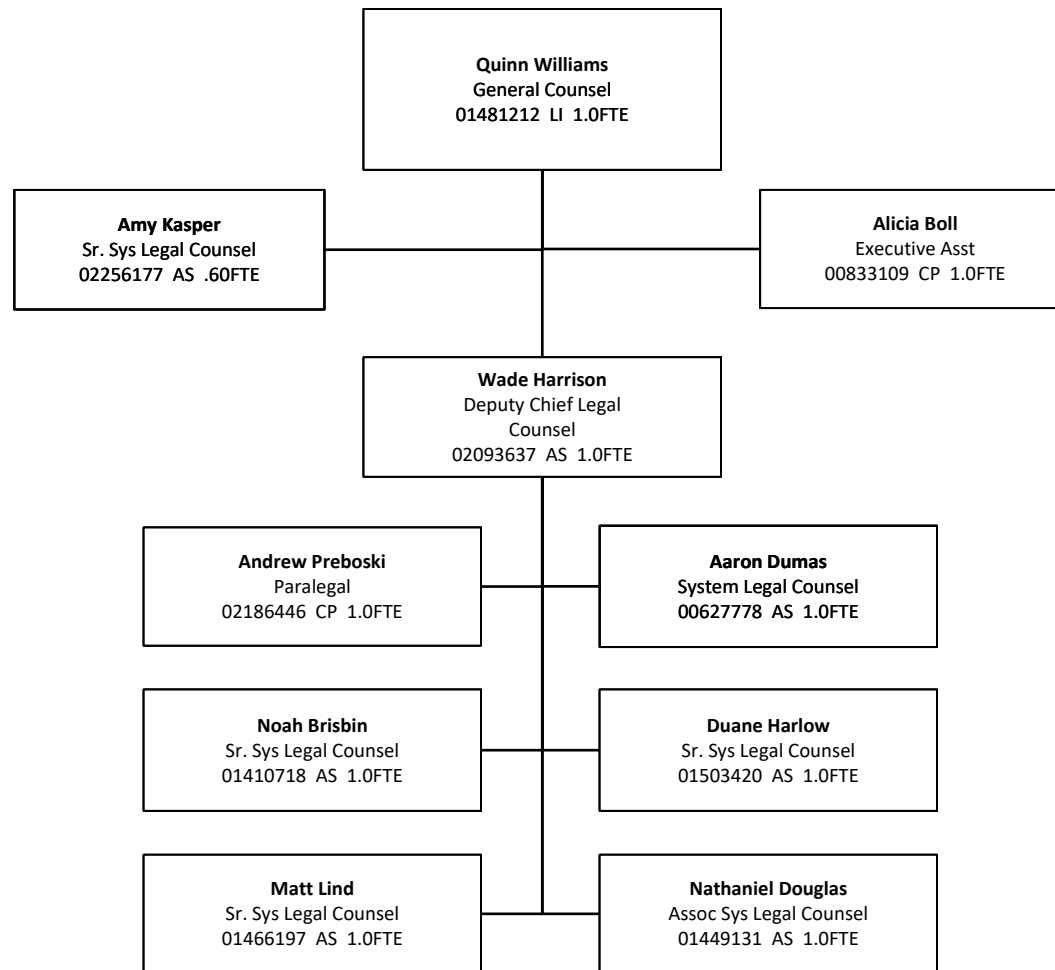
# Universities of Wisconsin

## Office of Compliance & Risk Management



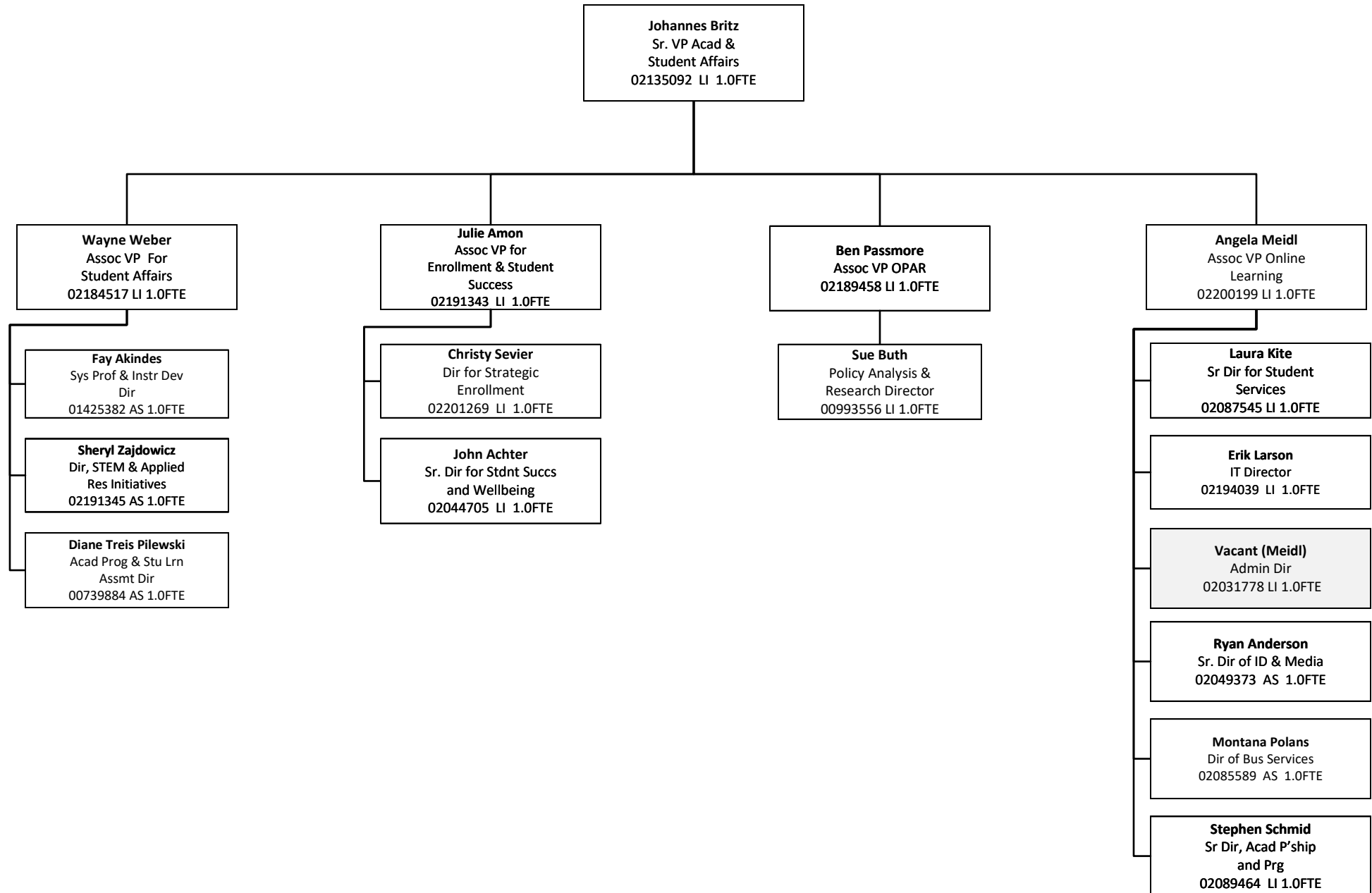
# Universities of Wisconsin

## Office of General Counsel



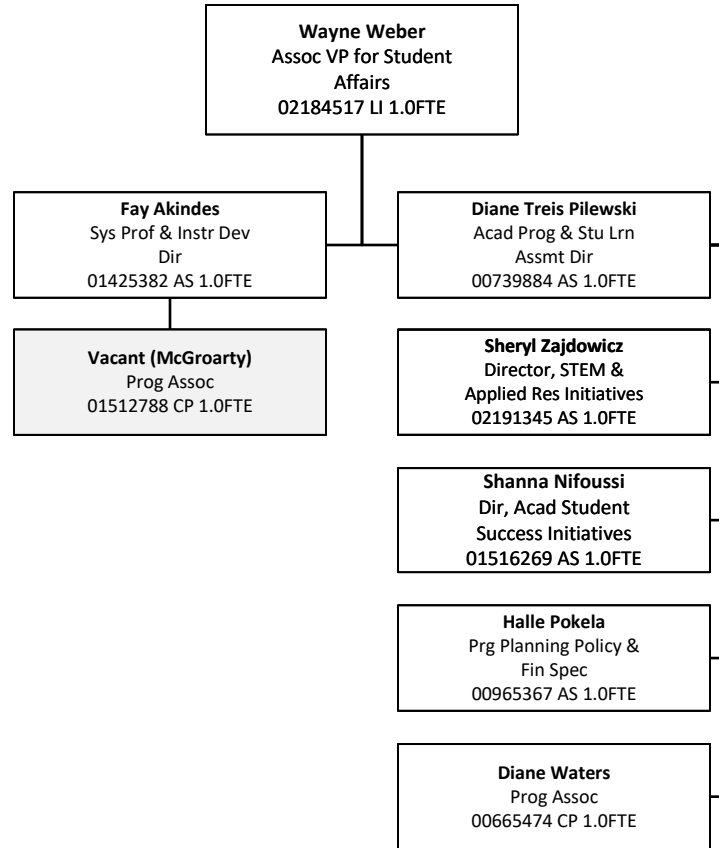
# Universities of Wisconsin

## Division of Academic & Student Affairs



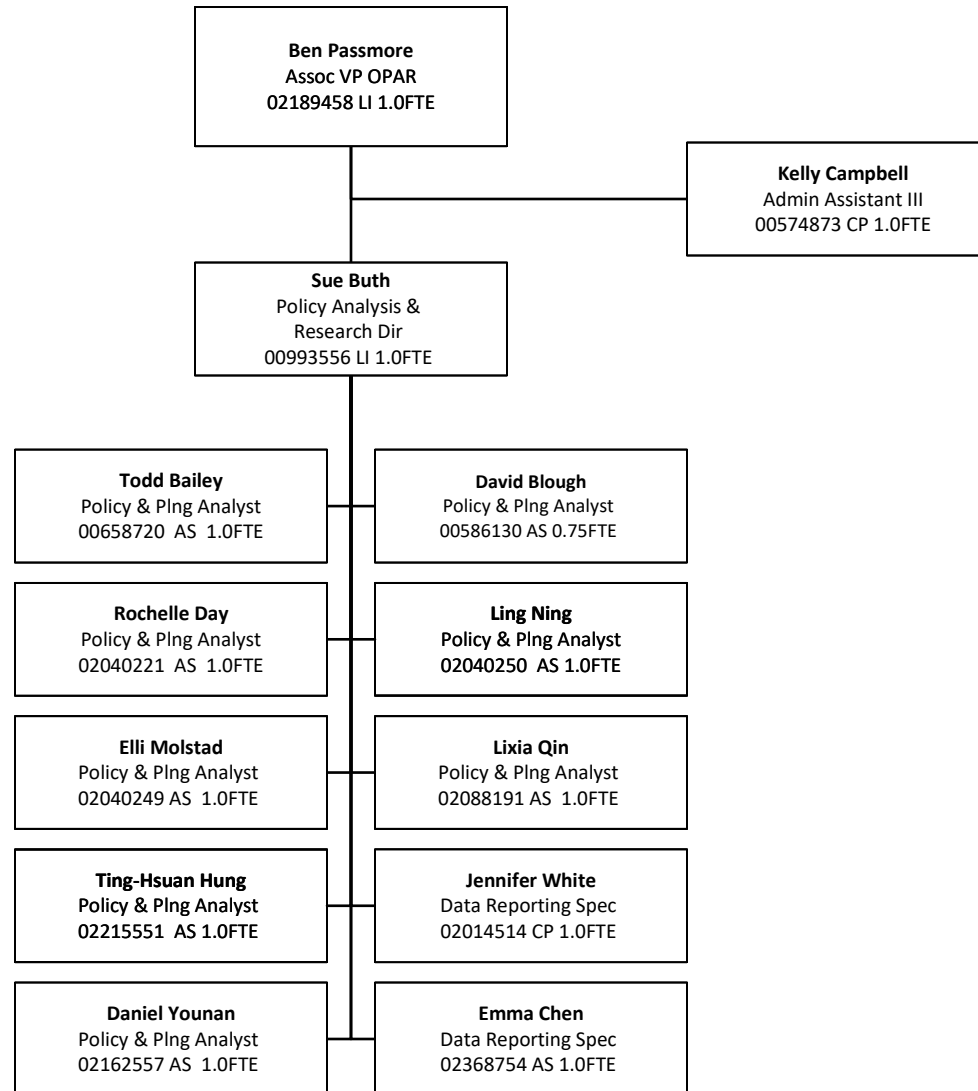
# Universities of Wisconsin

## *Academic & Student Affairs – Office of Academic Affairs*



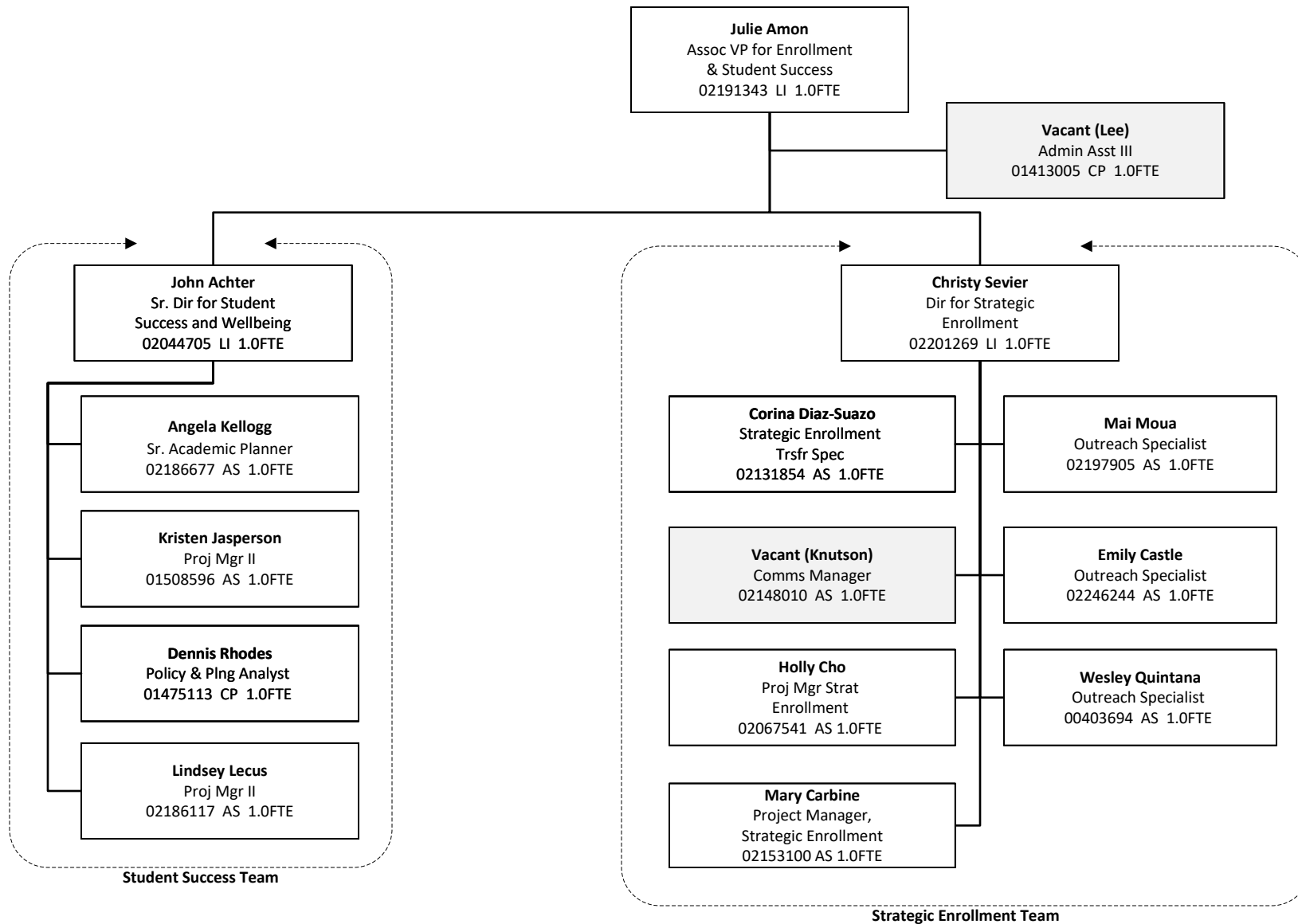
# Universities of Wisconsin

## *Academic & Student Affairs – Office of Policy Analysis & Research*



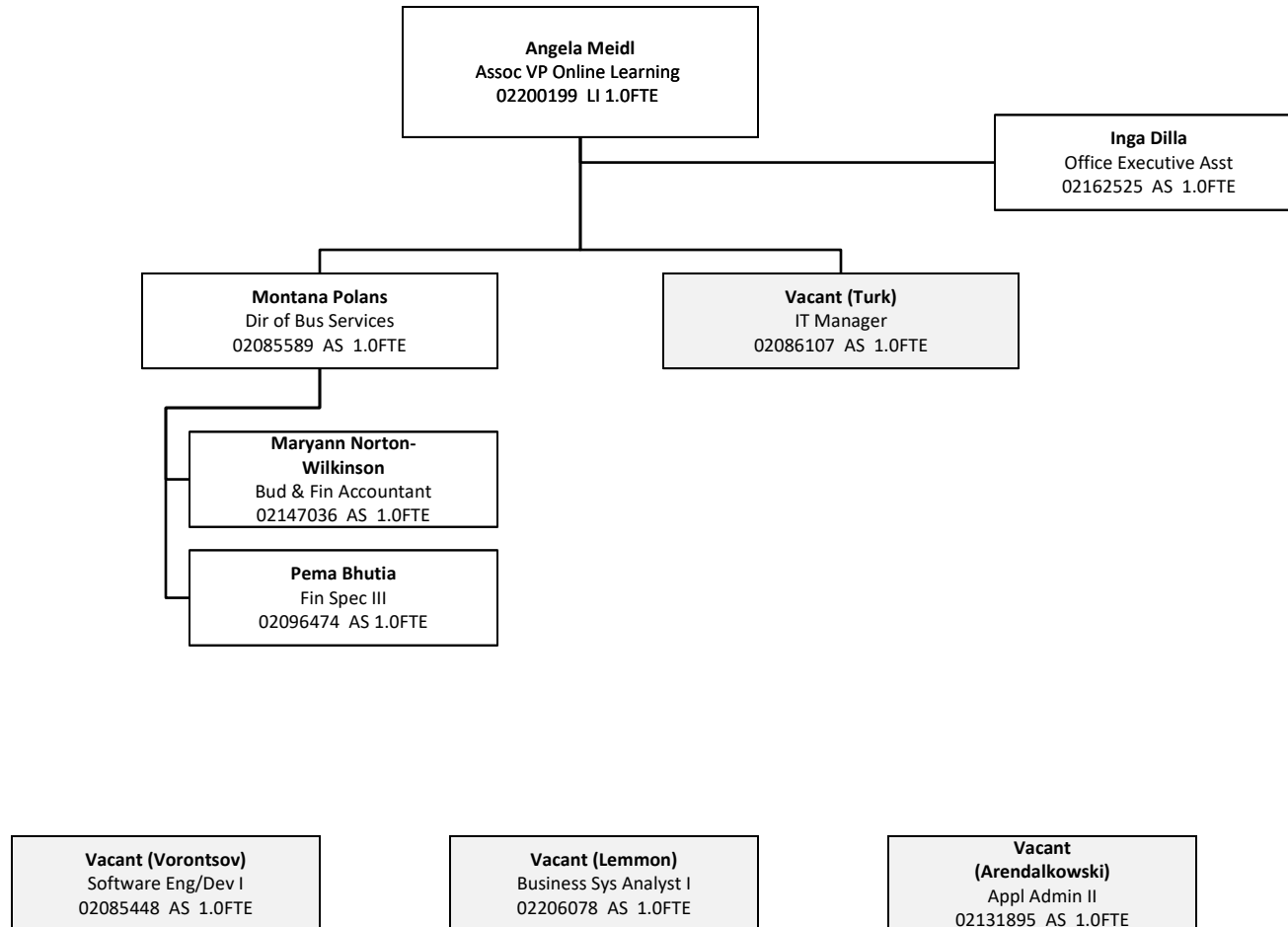
# Universities of Wisconsin

## Academic & Student Affairs - Office of Enrollment & Student Success



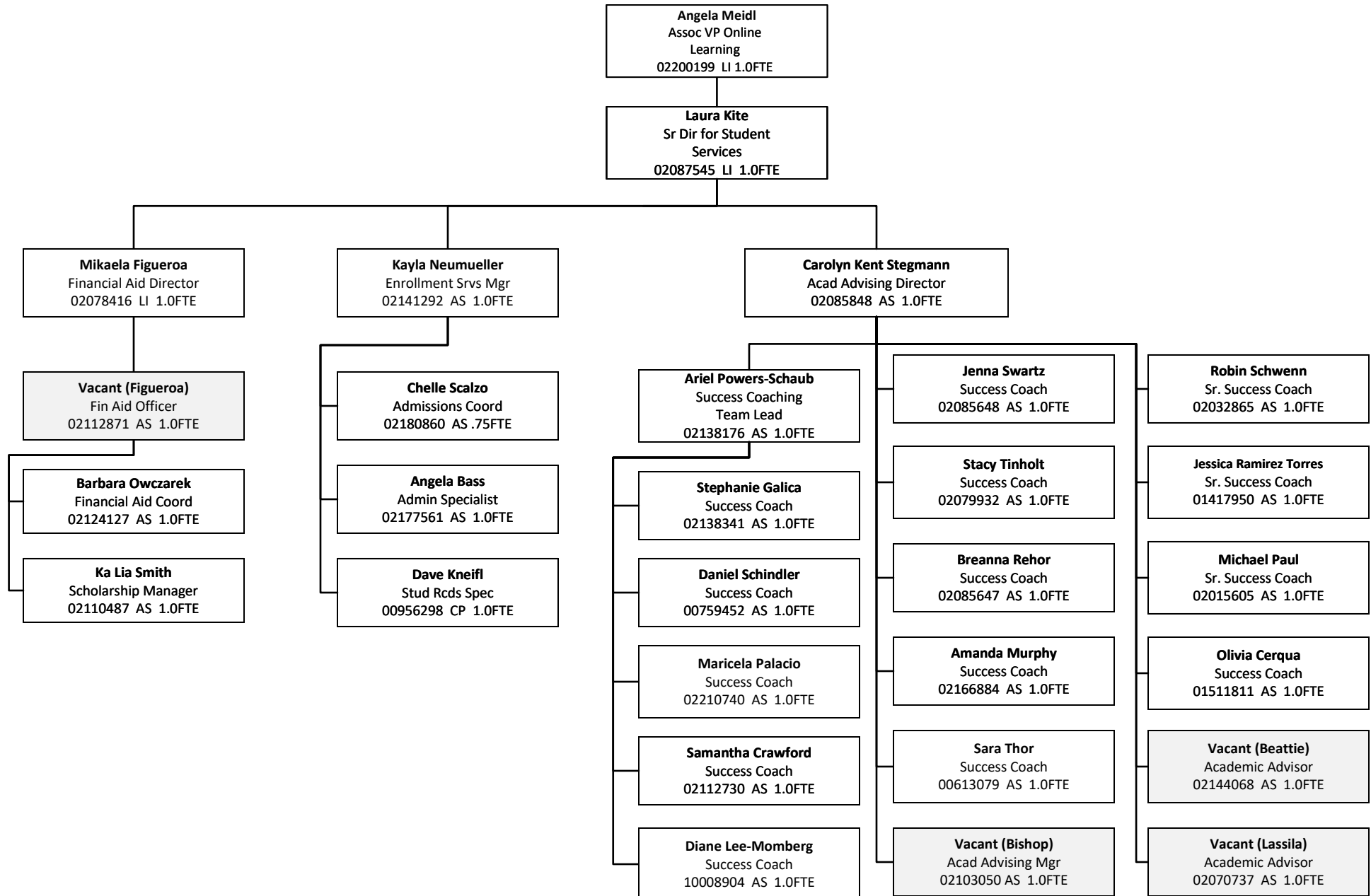
# Universities of Wisconsin

## Academic & Student Affairs – Office of Online & Professional Learning Resources – Administration



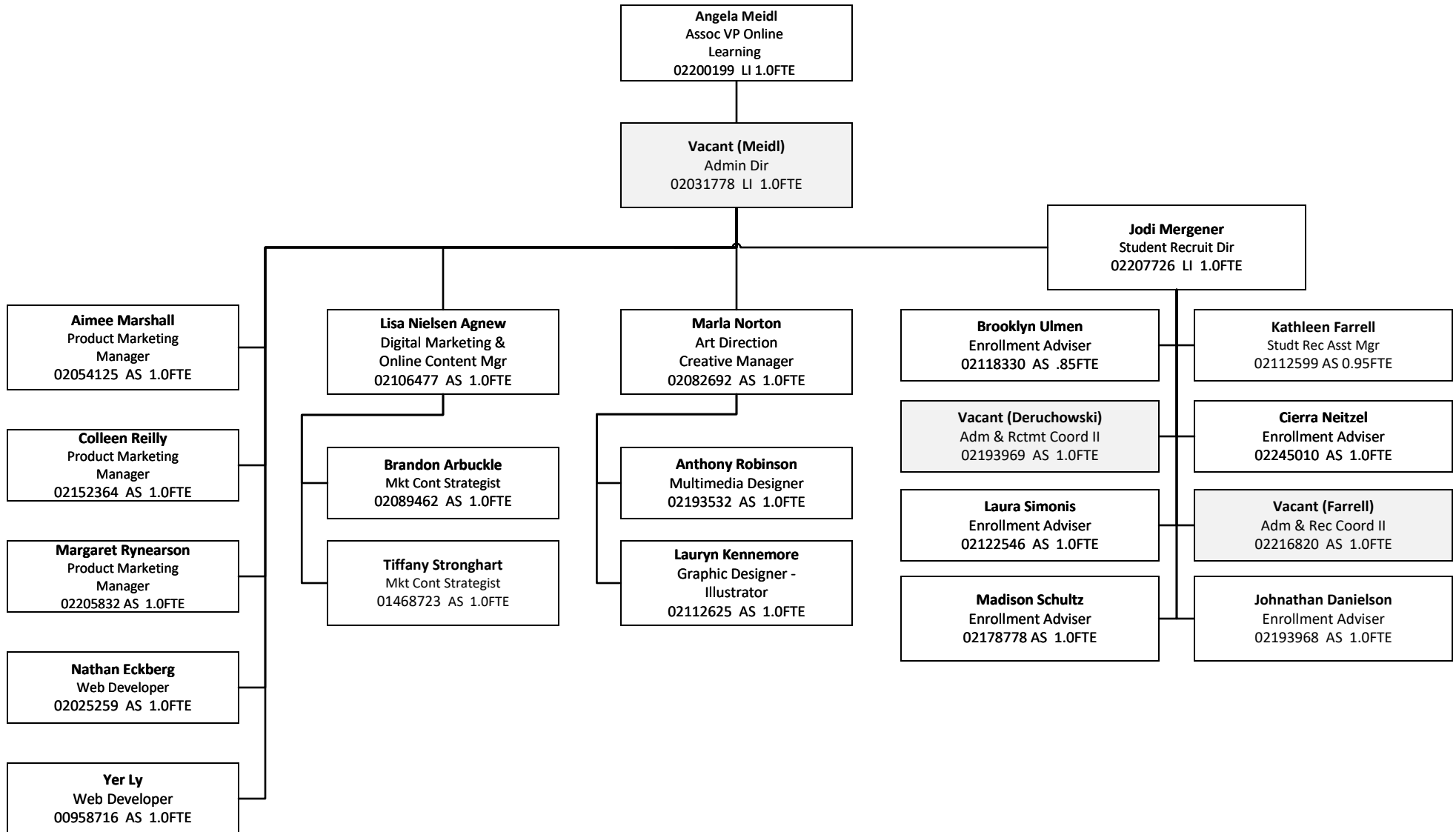
# Universities of Wisconsin

## Academic & Student Affairs – Office of Online & Professional Learning Resources – Student Engagement



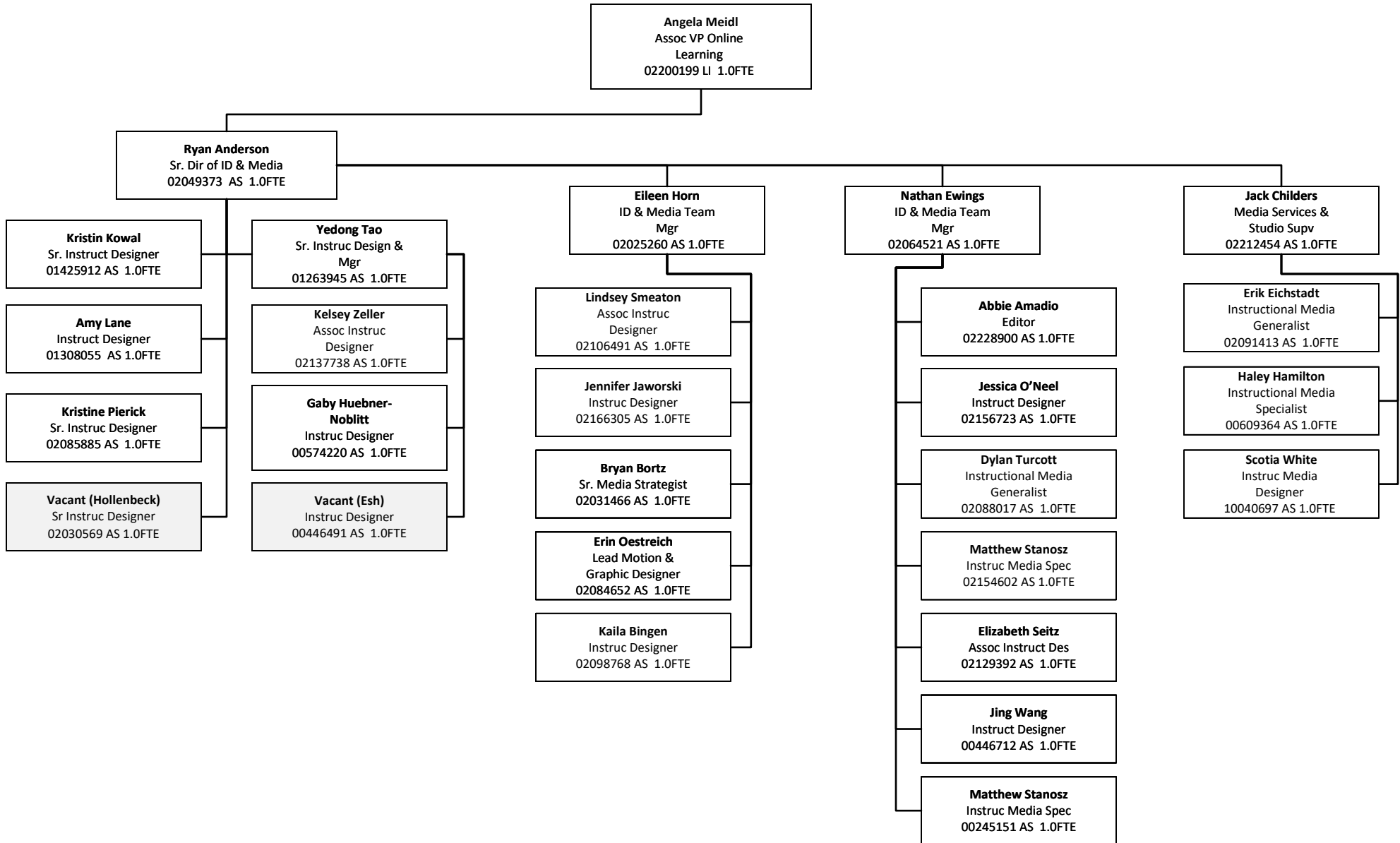
# Universities of Wisconsin

## Academic & Student Affairs – Office of Online & Professional Learning Resources – Marketing & Recruiting



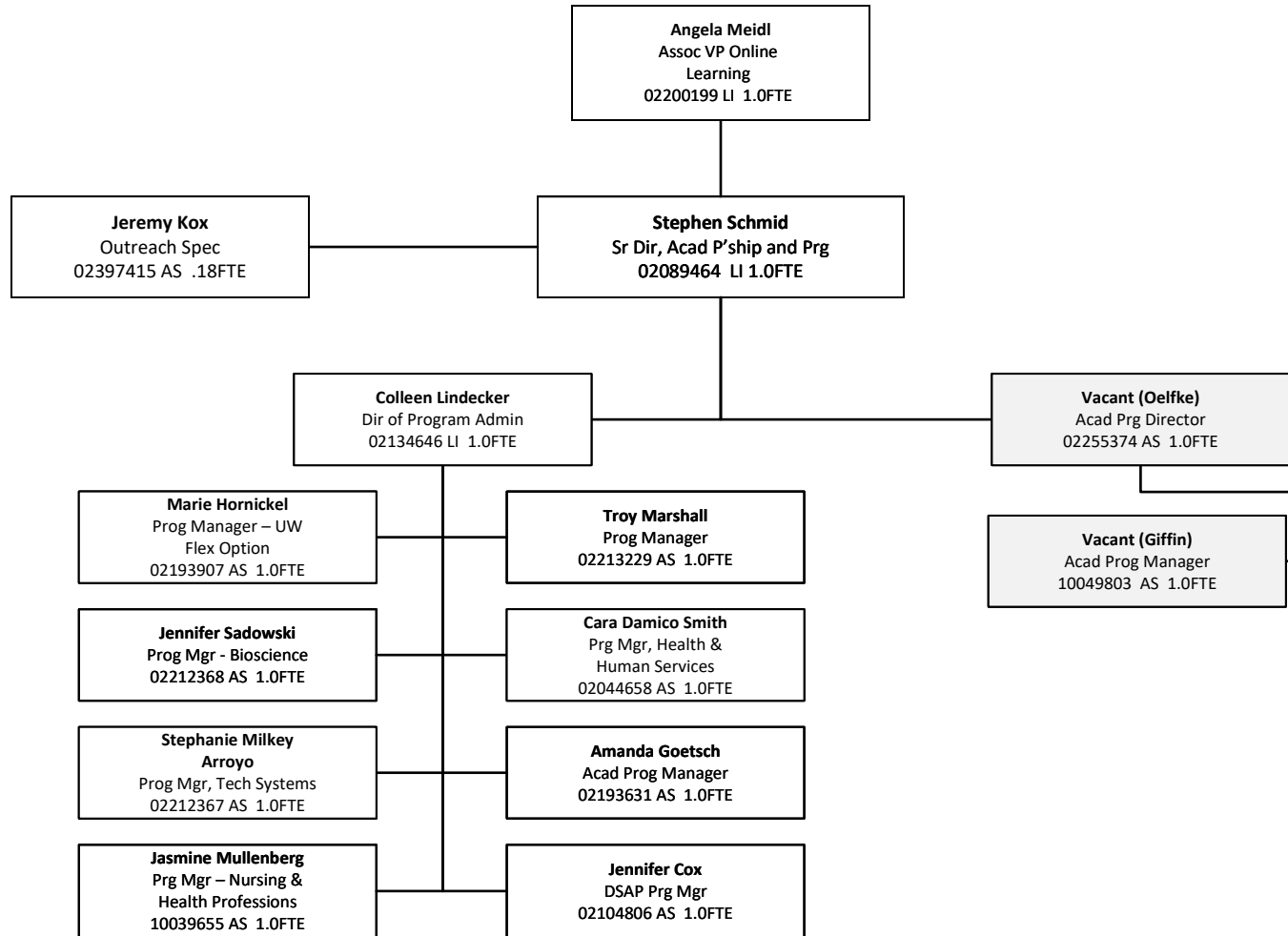
# Universities of Wisconsin

*Academic & Student Affairs – Office of Online & Professional Learning Resources – Instructional & Media Design*



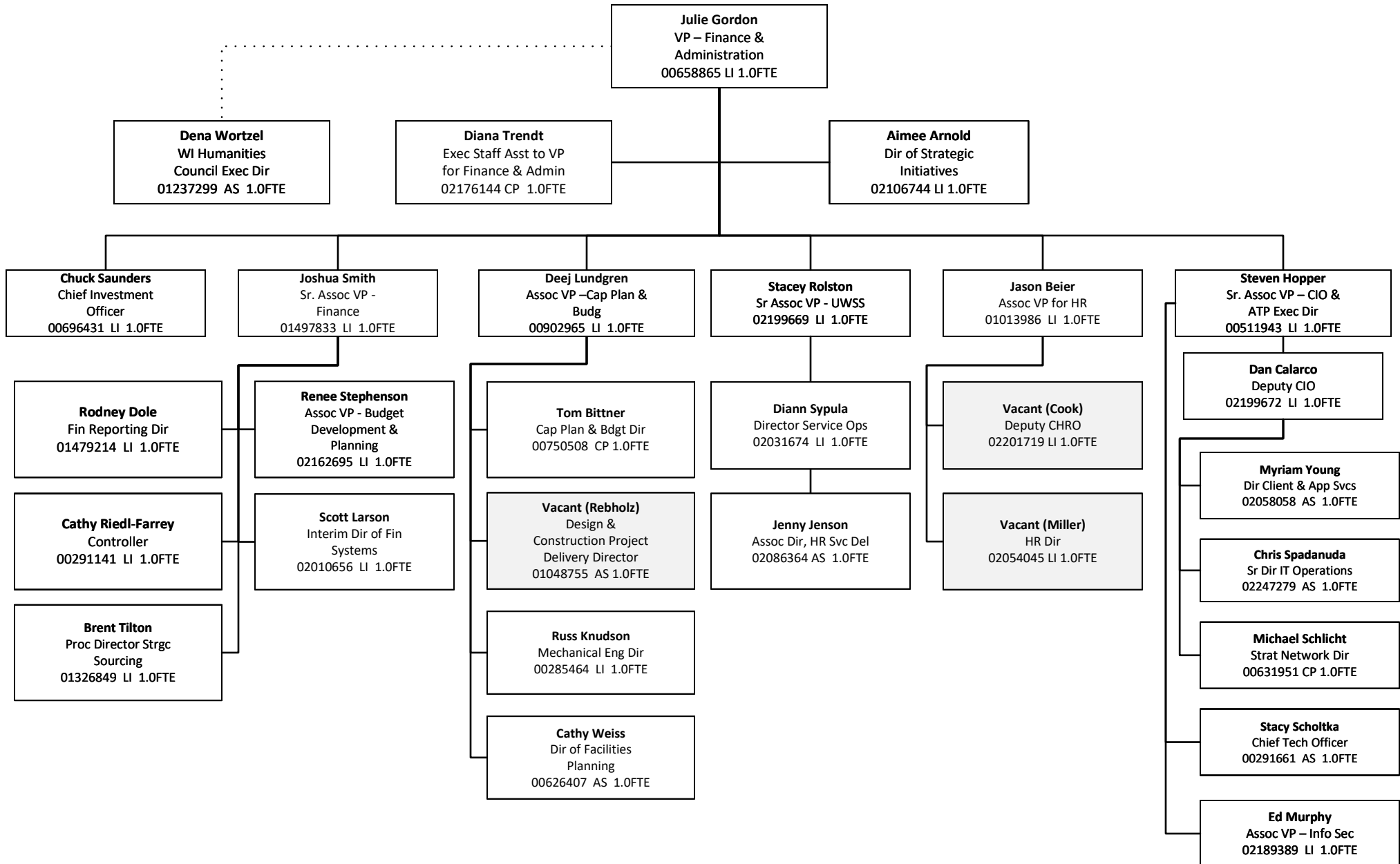
# Universities of Wisconsin

*Academic & Student Affairs – Office of Online & Professional Learning Resources – Instructional & Media Design*



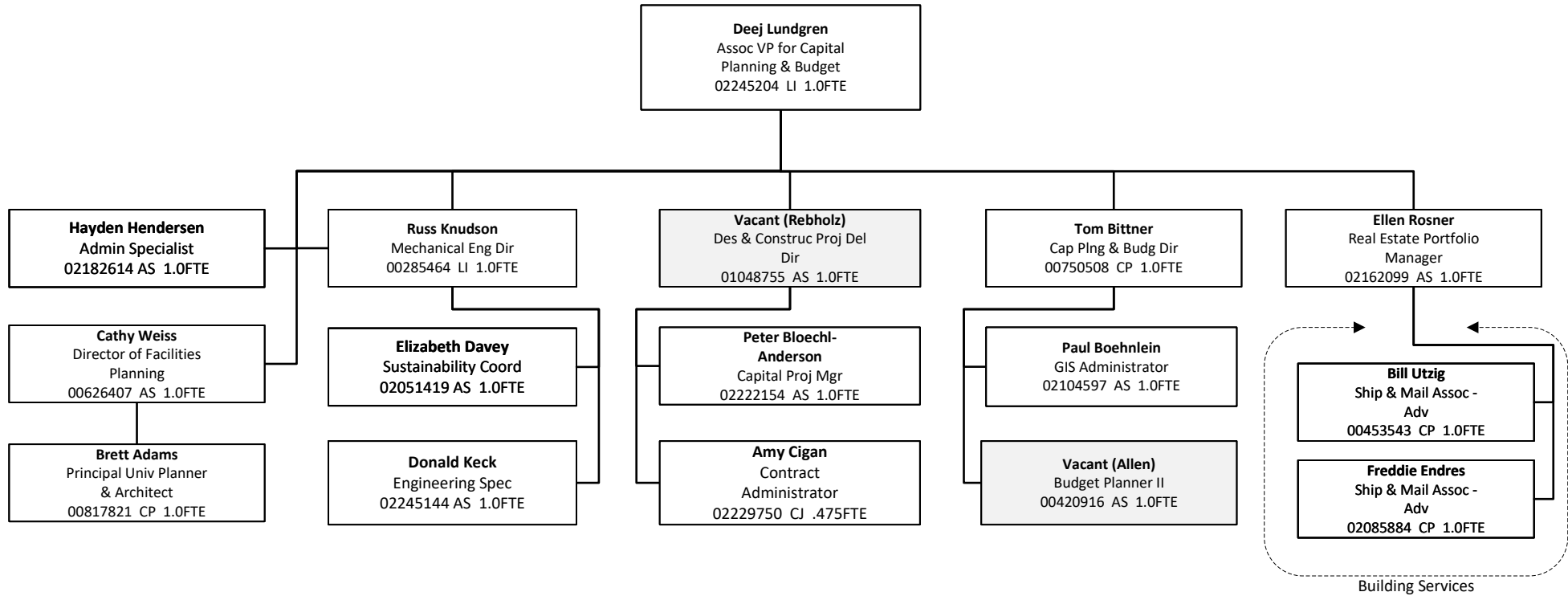
# Universities of Wisconsin

## Division of Finance & Administration



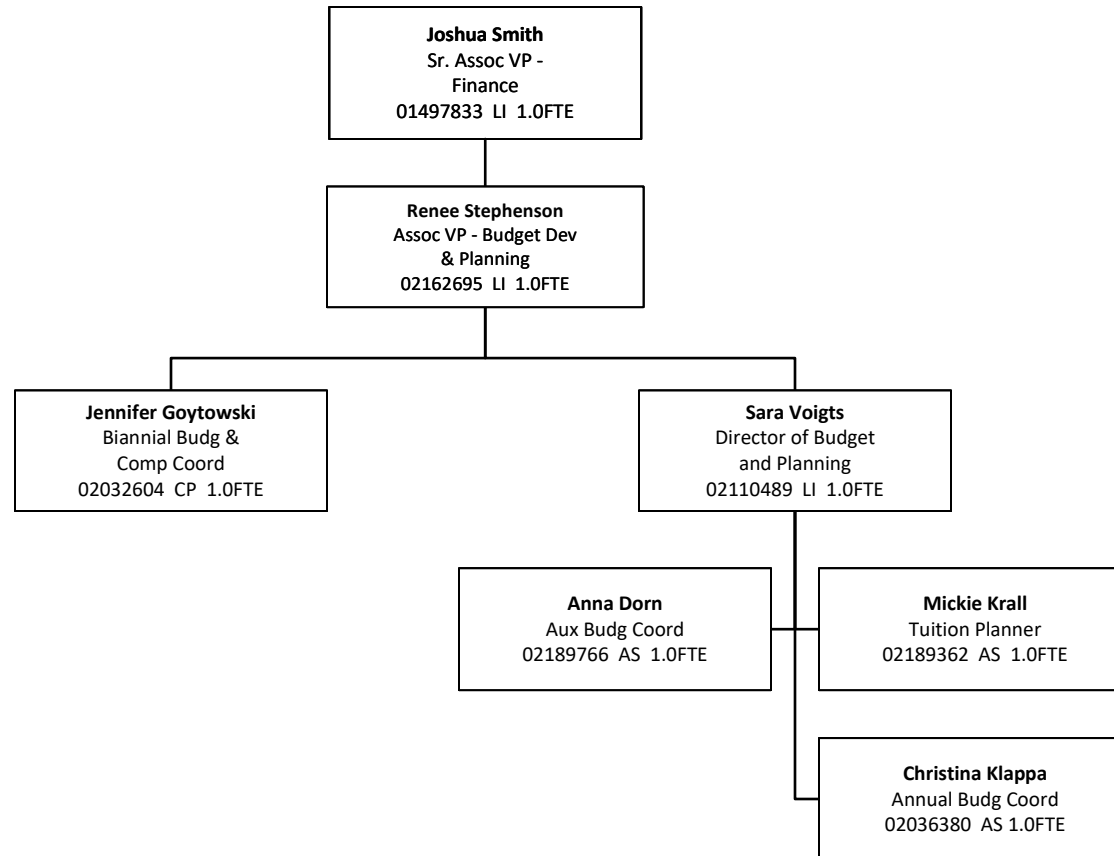
# Universities of Wisconsin

## Finance & Administration – Office of Capital Planning & Budget



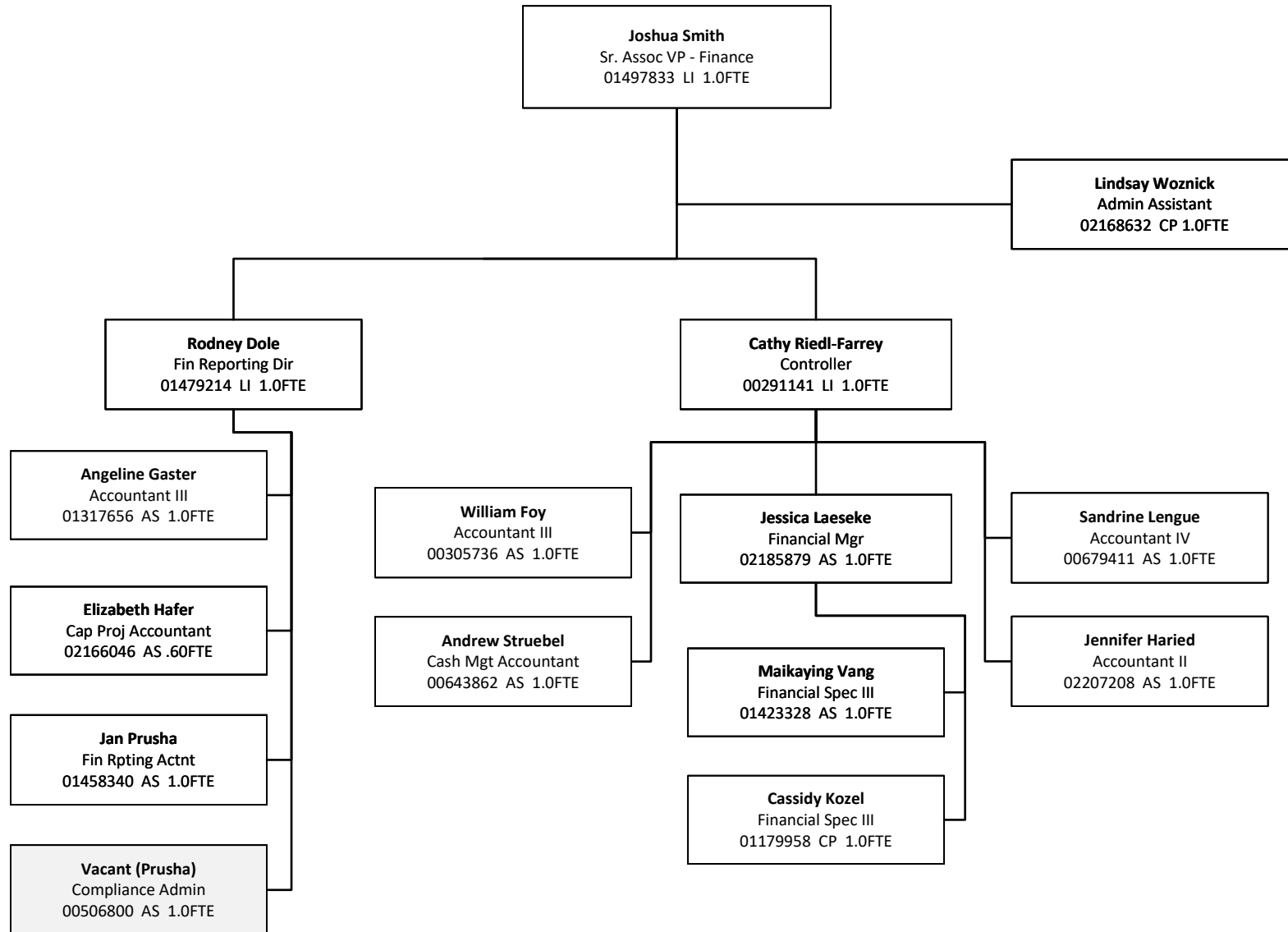
# Universities of Wisconsin

## *Finance & Administration - Office of Finance - Budget & Planning*



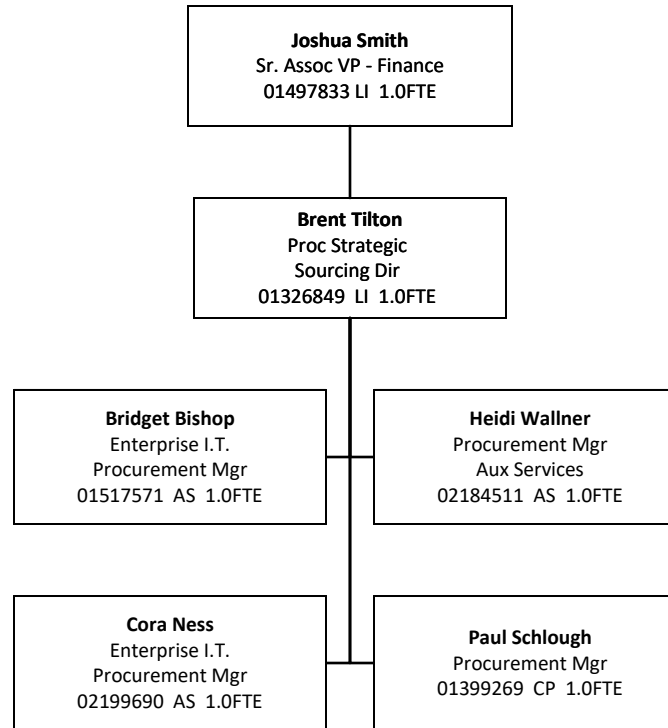
# Universities of Wisconsin

## Finance & Administration – Office of Finance – Financial Administration



# Universities of Wisconsin

## *Finance & Administration – Office of Finance – Procurement Strategic Sourcing*





# Universities of Wisconsin

Updated 6/8/26

*Finance & Administration - Office of Finance – Financial Systems Support*

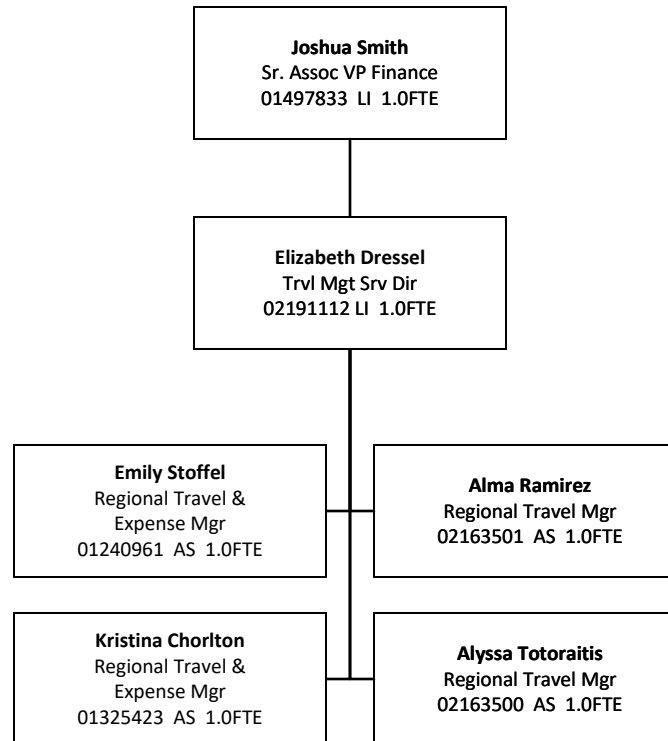
**Joshua Smith**  
Sr. Assoc VP -  
Finance  
01497833 LI 1.0FTE

**Scott Larson**  
Interim Dir of Fin  
Systems  
02010656 LI 1.0FTE

**Denise McDonald**  
Fin Sys Supv  
01312376 AS 1.0FTE

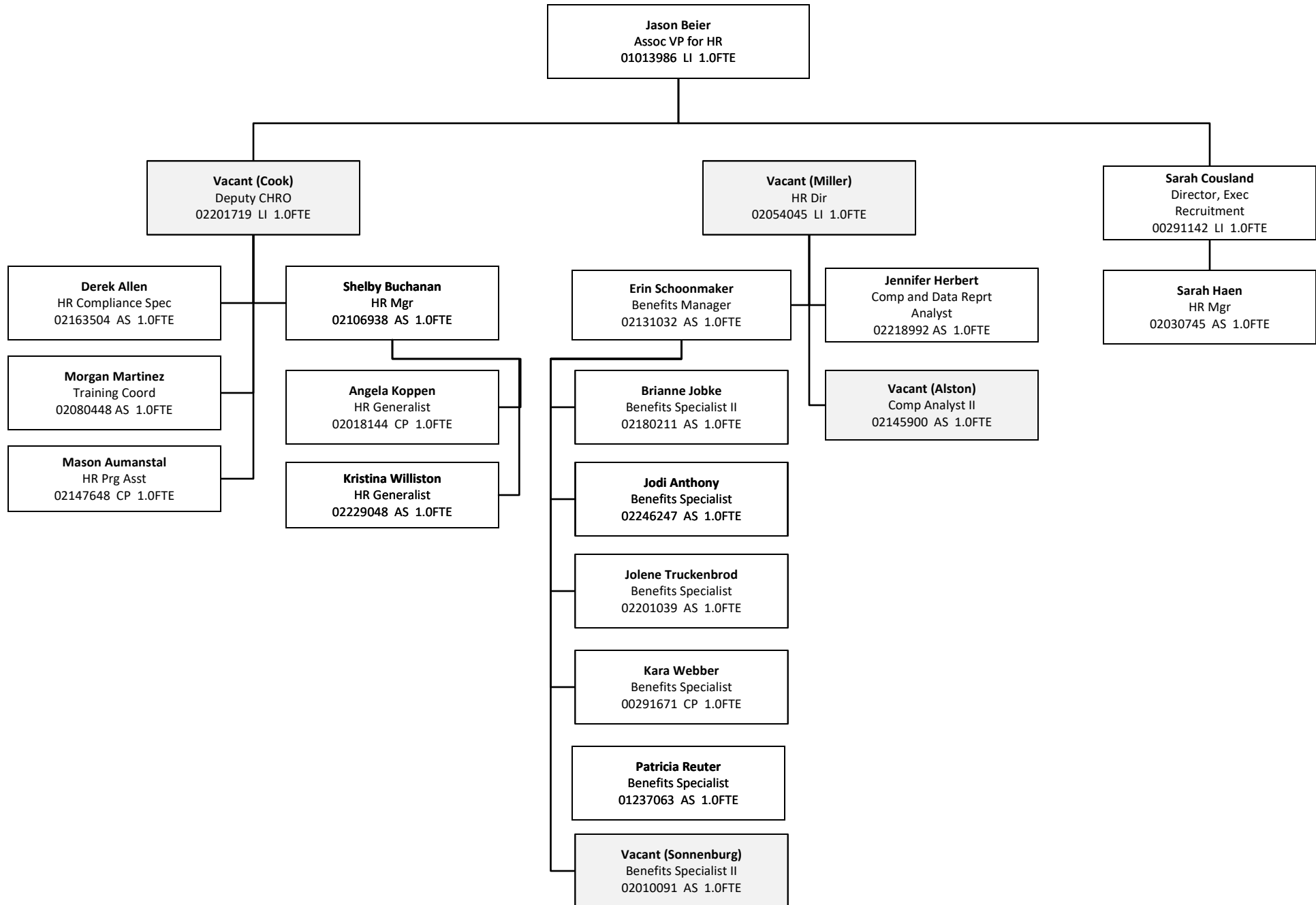
# Universities of Wisconsin

## *Finance & Administration - Office of Finance – Travel Management Services*



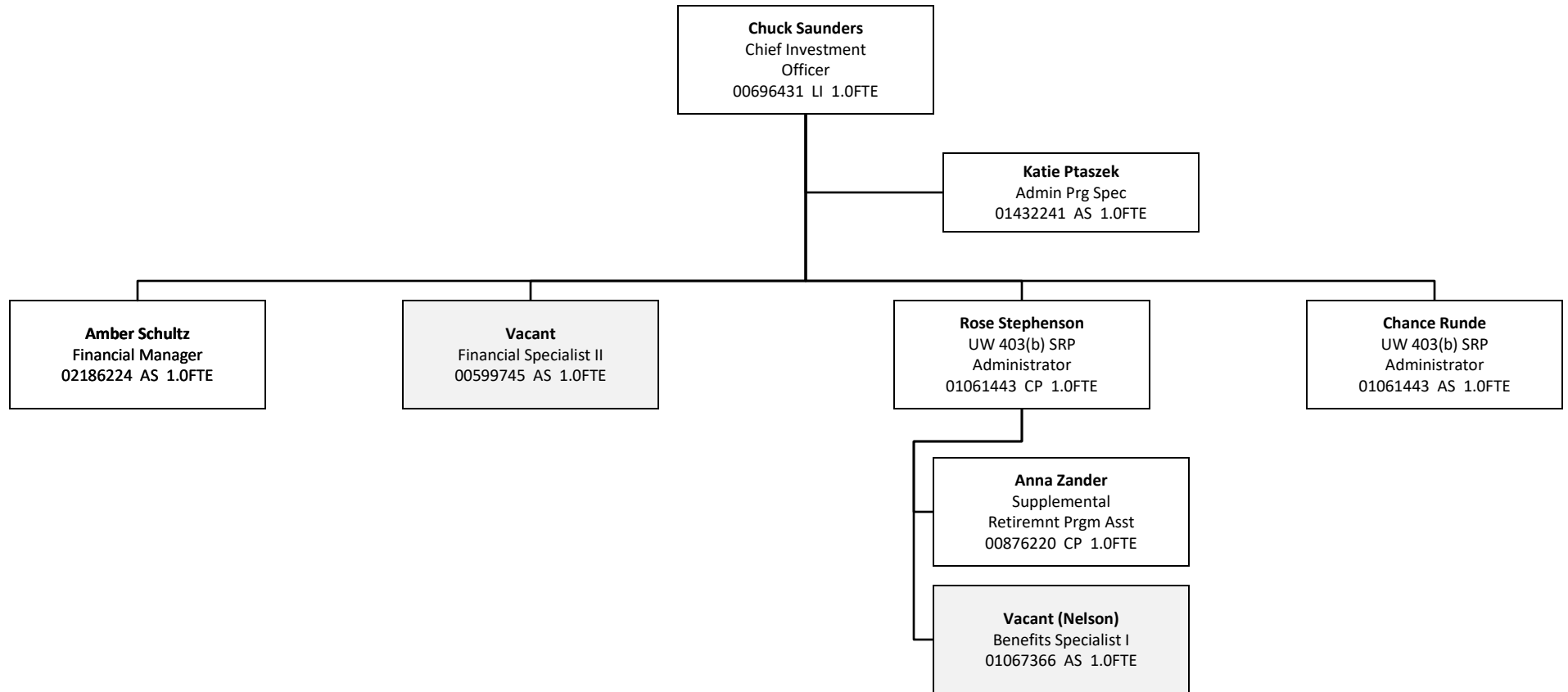
# Universities of Wisconsin

## Finance & Administration – Office of Human Resources



# Universities of Wisconsin

## Finance & Administration - Office of Trust Funds



# Universities of Wisconsin

## Finance & Administration – Office of Learning & Information Technology Services

**Steven Hopper**  
Sr. Assoc VP CIO & ATP  
Exec Dir  
00511943 LI 1.0FTE

**Dan Calarco**  
Deputy CIO  
02199672 LI 1.0FTE

**Myriam Young**  
Dir Client & App Services  
02058058 AS 1.0FTE

**Chris Spadanuda**  
Sr Dir IT Operations  
02247279 AS 1.0FTE

**Vivek Deshpande**  
SIS Mgr  
01127805 AS 1.0FTE

**David Winter**  
App Dev Lead  
00638216 CP 1.0FTE

**Dee Auxier**  
Data Reporting Spec  
02186492 AS 1.0FTE

**Sri Alluri**  
Sr. Web App Dev  
01209564 CP 1.0FTE

**Vacant (Stull)**  
DW Eng/Dev II  
00291620 AS 1.0FTE

**Kimberly Miller**  
Data Reporting Spec  
02086102 AS 1.0FTE

**Stewart Ramaker**  
Desktop Supp Tech  
02077910 AS 1.0FTE

**Luke Nelson**  
IT Help Desk Spec III  
01519575 AS 1.0FTE

**Derek Gordon**  
IT Help Desk Spec II  
02138077 CP 1.0FTE

**Eugene Anderson**  
IT Help Desk Spec II  
02127881 AS 1.0FTE

**Mark Mailloux**  
Policy & Plng Analyst  
02087008 AS 1.0FTE

**Justin Weidner**  
Sr. Systems Dev  
02134912 AS 1.0FTE

**Rachel Klingler**  
Web Ops Mgr  
02142745 AS 1.0FTE

**Chris Meinholz**  
Sr. Info Tech Arch  
01156482 AS 1.0FTE

**Thomas Sanna**  
Sys Programmer  
02067424 AS 1.0FTE

**Ryan Hayes**  
Web Dev/Designer  
02033108 AS 1.0FTE

**Jeffrey Hegeman**  
Software Eng/Dev IV  
01064759 AS 1.0FTE

**Rachel Hernandez**  
PeopleSoft Dev  
01143139 AS 1.0FTE

**Jamel Heim**  
Software Eng/Dev IV  
00771313 AS 1.0FTE

**Victor Reynolds**  
PeopleSoft Dev  
02087707 CP 1.0FTE

**Susan Kipp-Garcia**  
Software Eng/Dev IV  
02328063 AS 1.0FTE

**Srikanth Vejandla**  
PeopleSoft Dev  
10030409 AS 1.0FTE

**Stephanie Paquin**  
PeopleSoft Dev  
Team Lead  
02296811 AS 1.0FTE

**Greg Delfeld**  
Software Eng/Dev IV  
00897854 CP 1.0FTE

**Vacant (Chiang)**  
Software Eng/  
PeopleSoft Dev IV  
02316297 AS 1.0FTE

**Kevin Crawford**  
PeopleSoft Dev  
02120199 AS 1.0FTE

**Michael Cole**  
Software Eng/Dev IV  
02315475 AS 1.0FTE

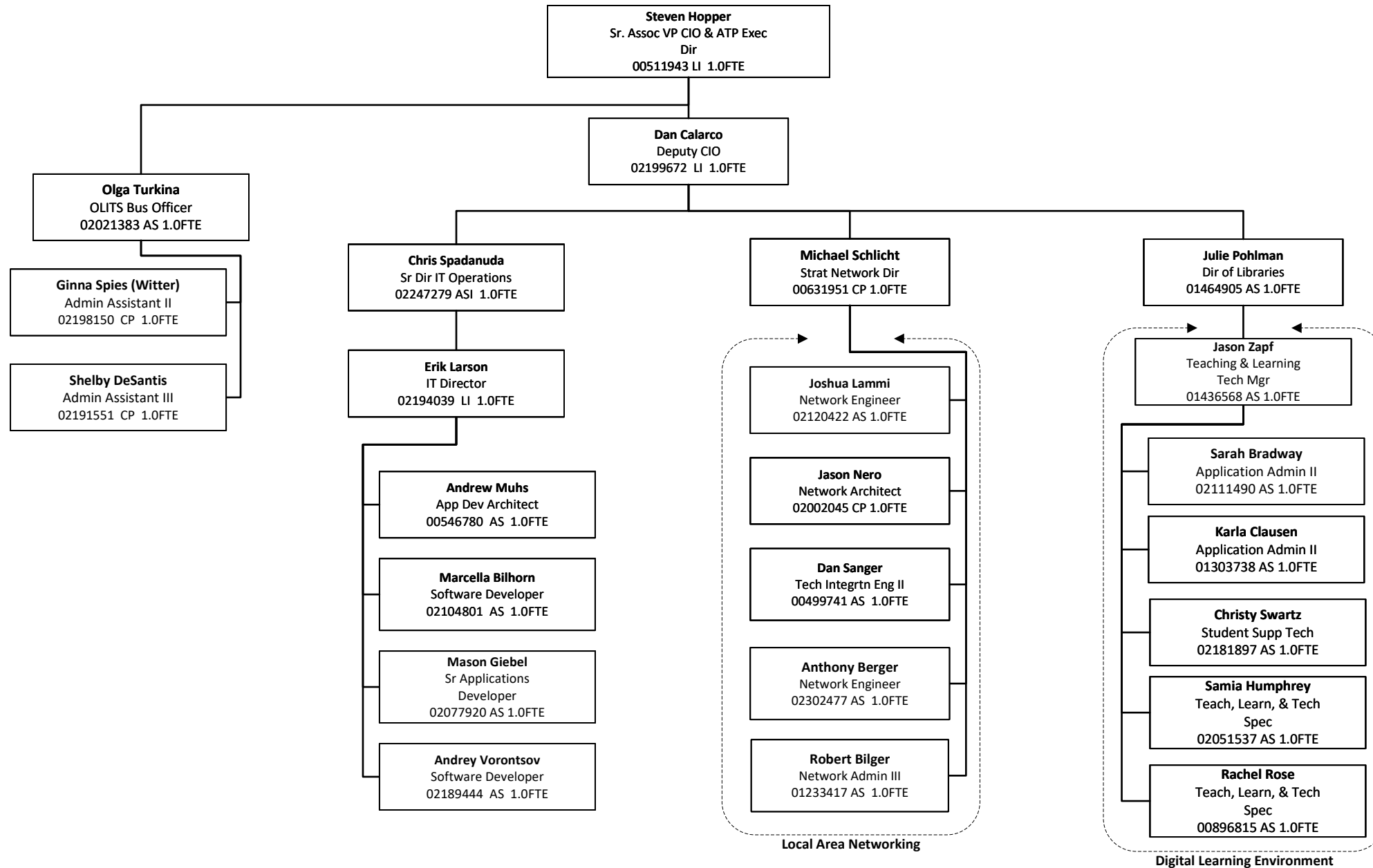
**Yau Lau**  
Sr Software Dev  
02104798 AS 1.0FTE

Client & Application Services

SIS Services

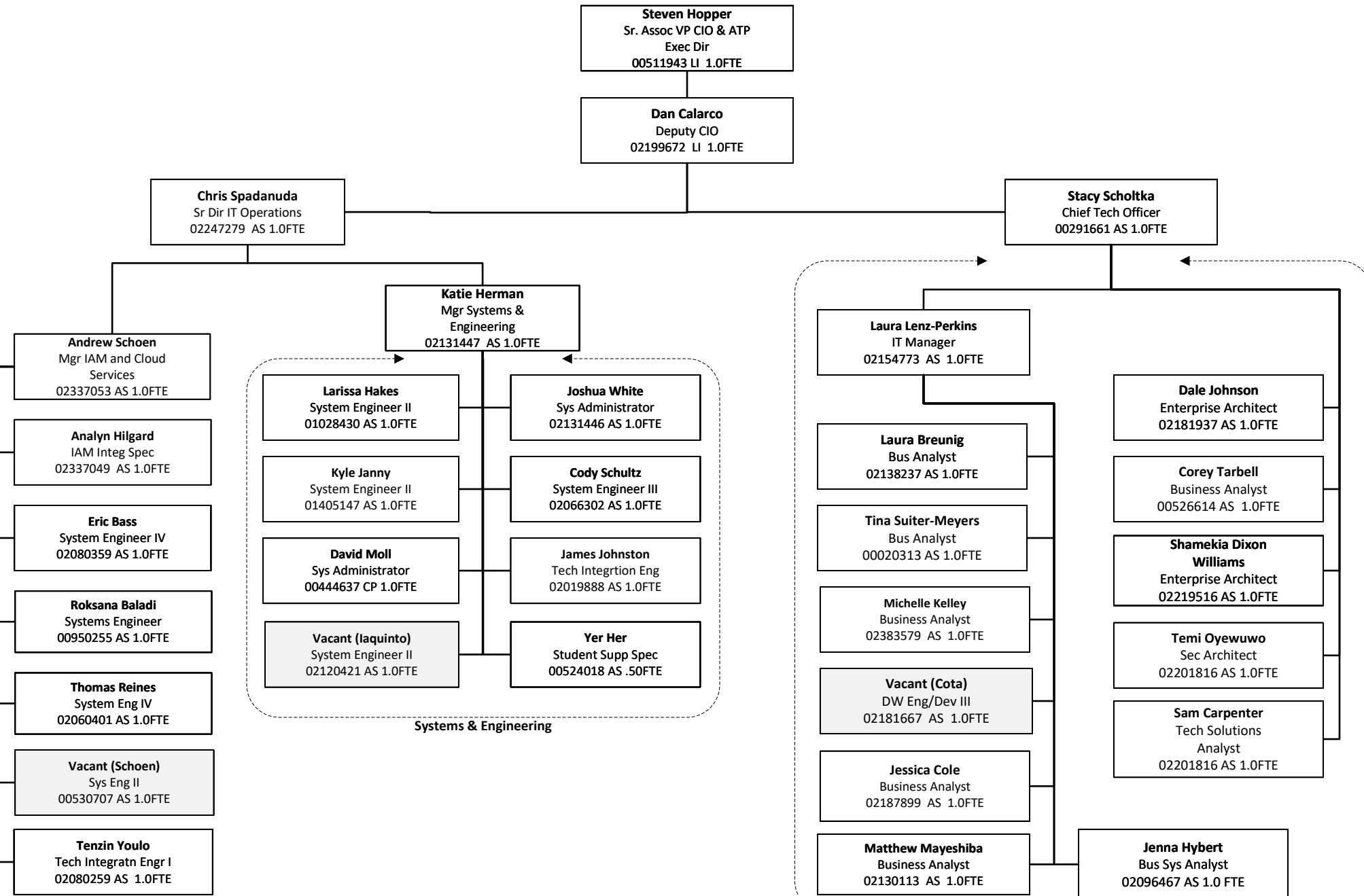
# Universities of Wisconsin

## Finance & Administration – Office of Learning & Information Technology Services



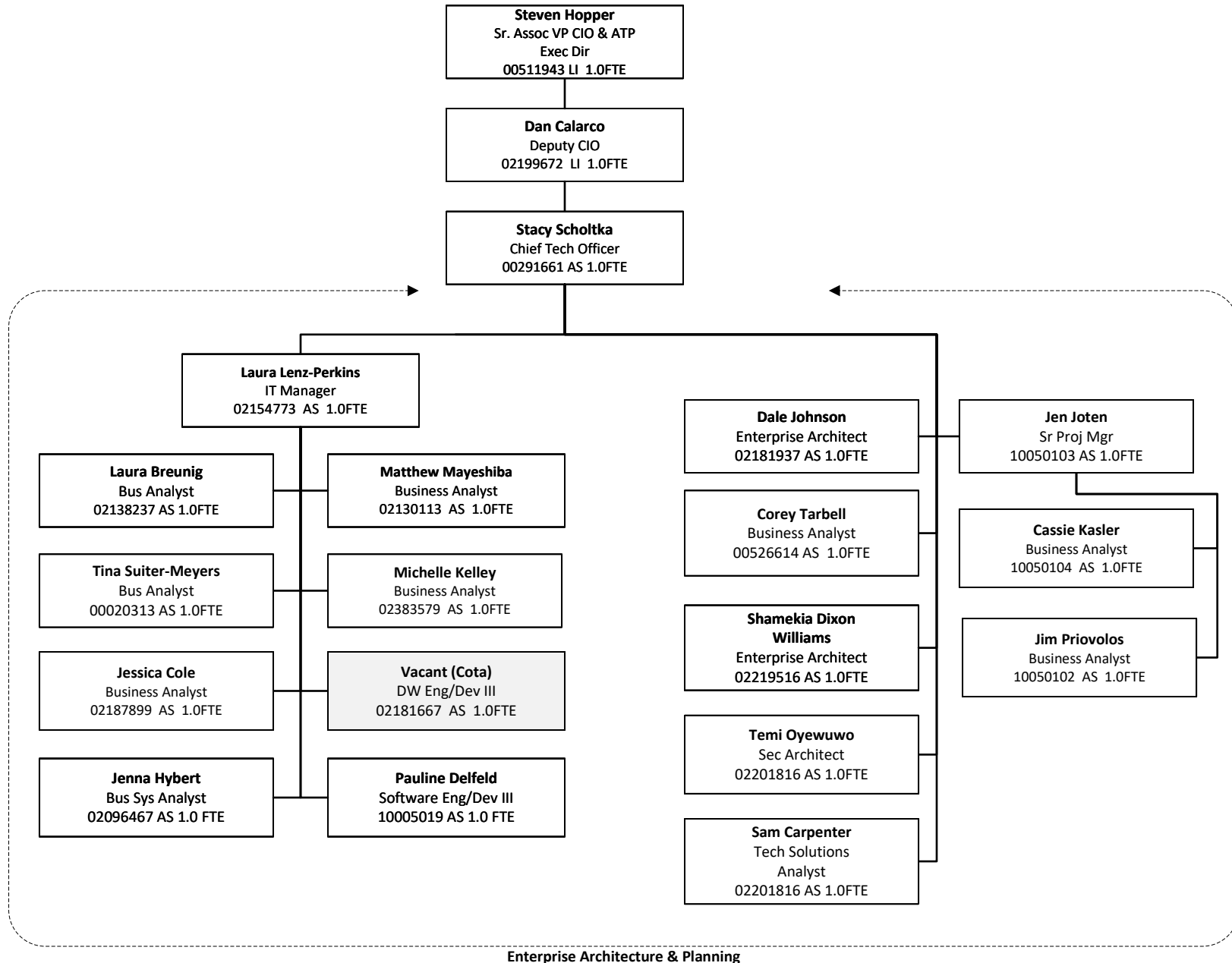
# Universities of Wisconsin

## Finance & Administration – Office of Learning & Information Technology Services Continued



# Universities of Wisconsin

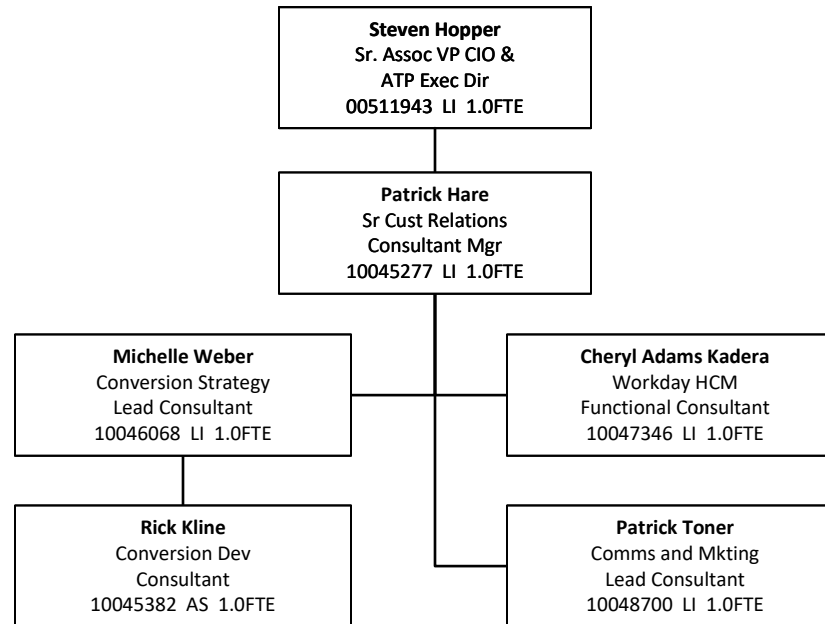
## Finance & Administration – Office of Learning & Information Technology Services Continued



Enterprise Architecture & Planning

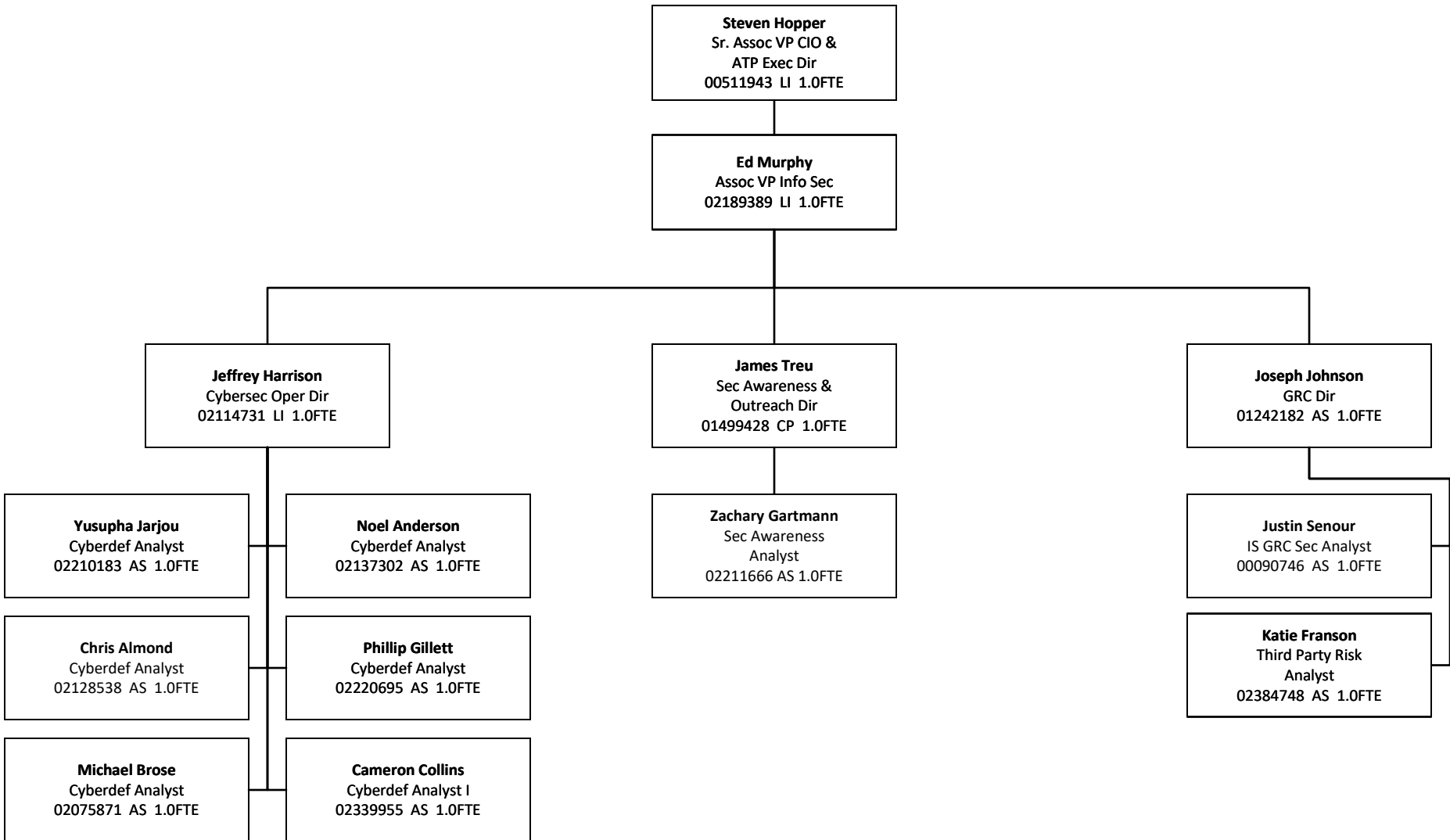
# Universities of Wisconsin

*Finance & Administration – Office of Learning & Information Technology – Badger Advisory Solutions and Services*



# Universities of Wisconsin

*Finance & Administration – Office of Learning & Information Technology - Office of Information Security*





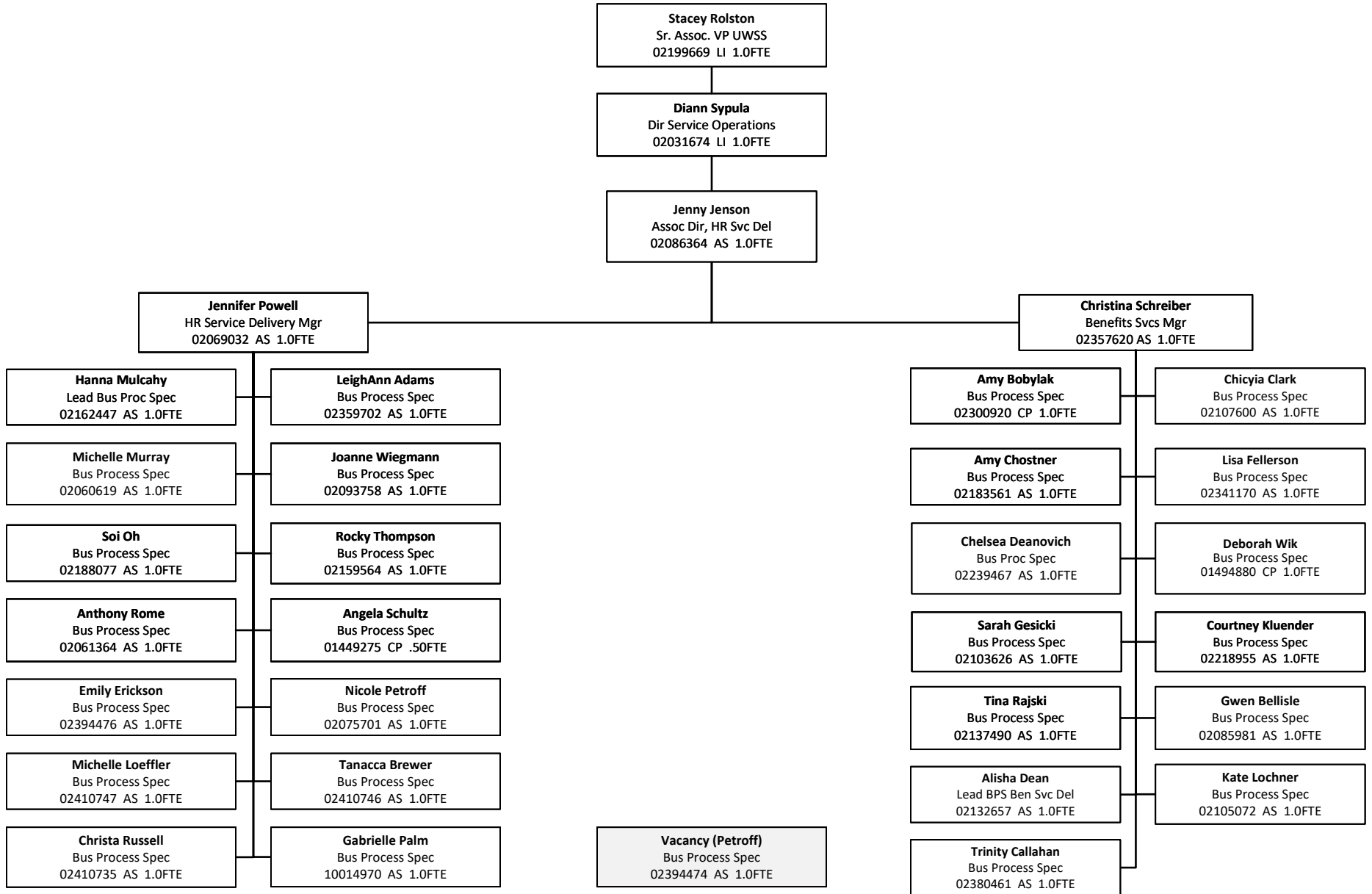
# Universities of Wisconsin

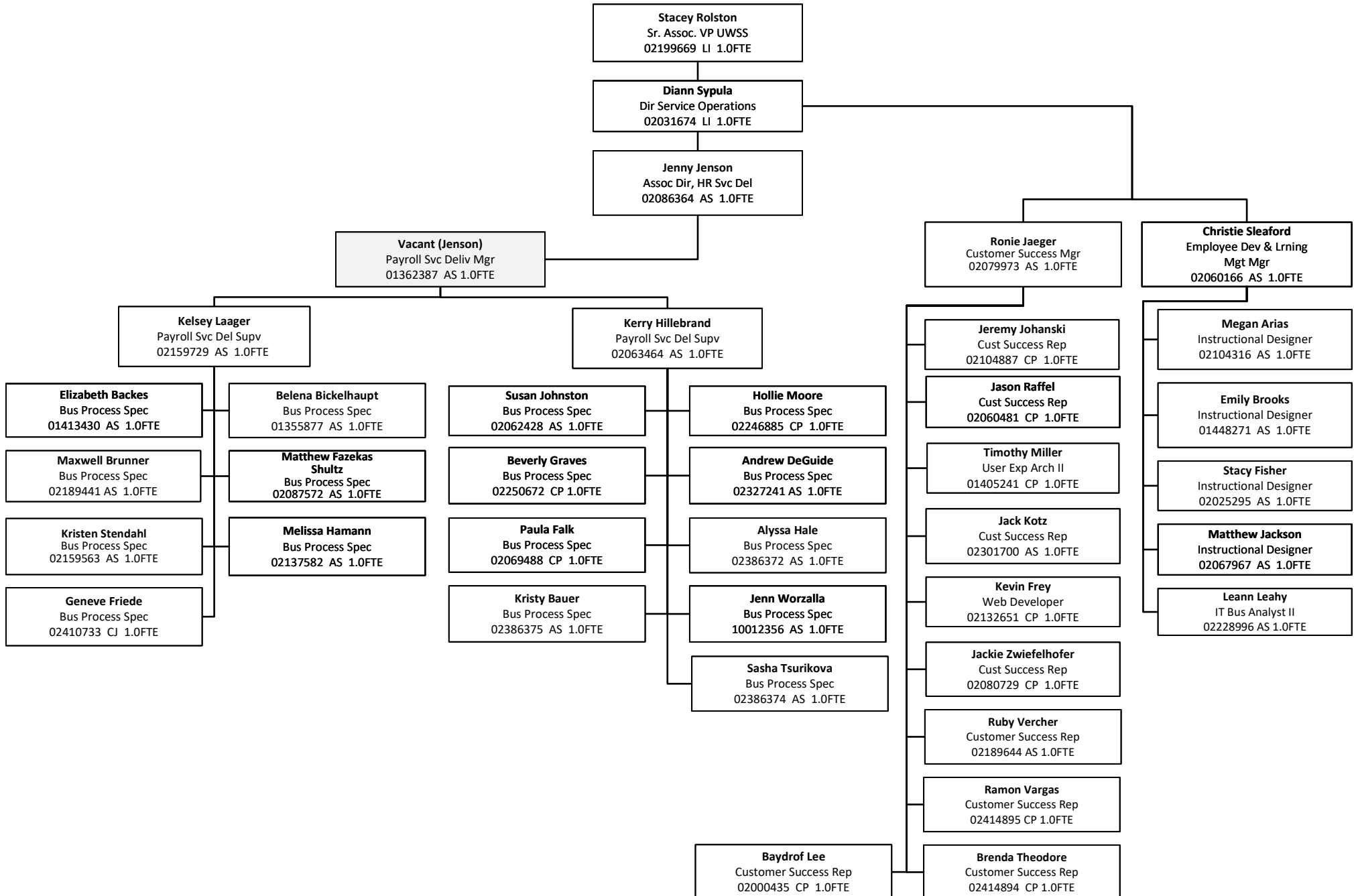
## *Finance & Administration – Strategic Initiatives*

**Aimee Arnold**  
Dir of Strategic  
Initiatives  
02106744 LI 1.0FTE

**Sarah Ebben**  
UW Sys Policy Analyst  
02237750 AS 1.0FTE

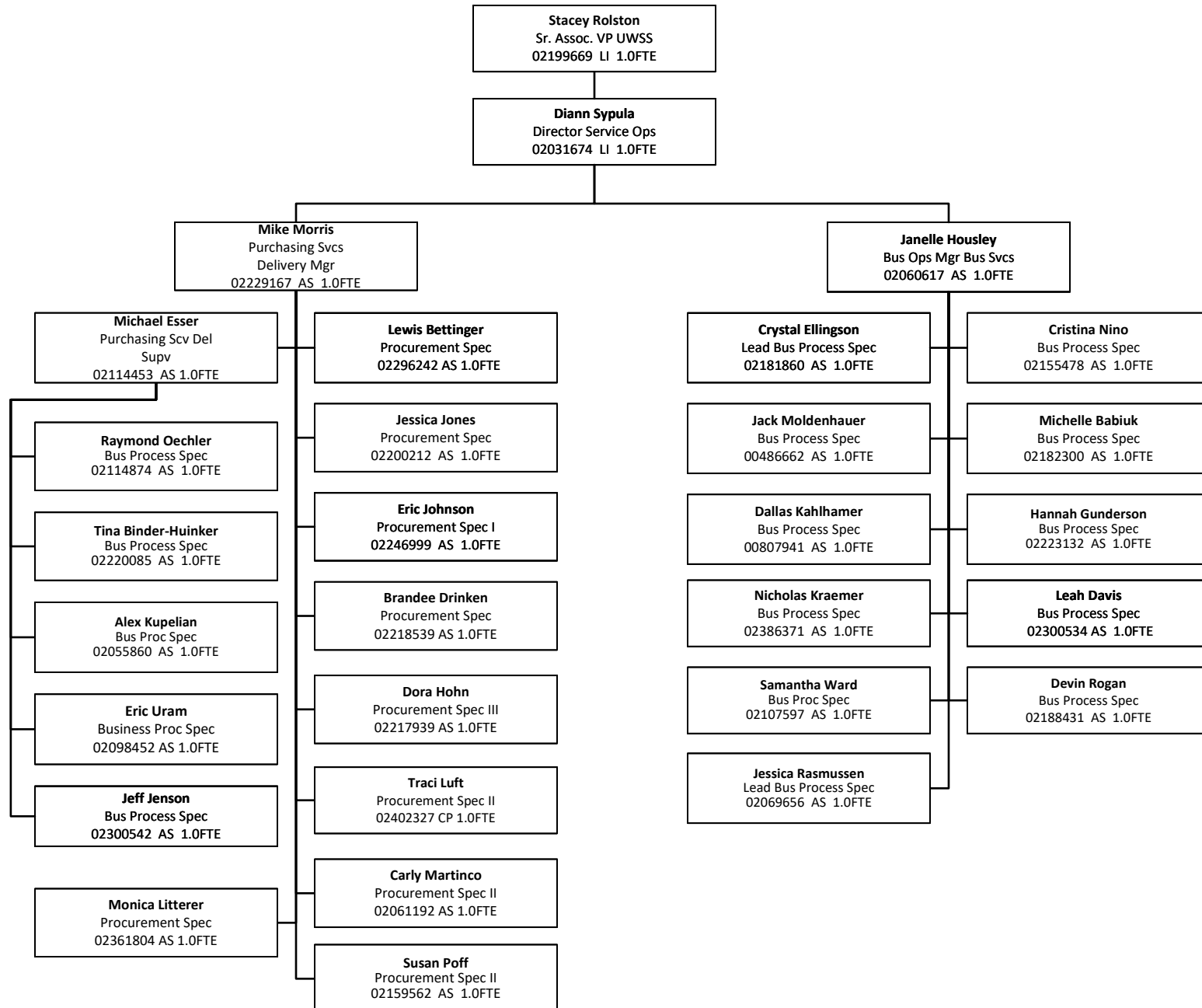
## Finance & Administration – UW Shared Services – HR Services & Customer Success



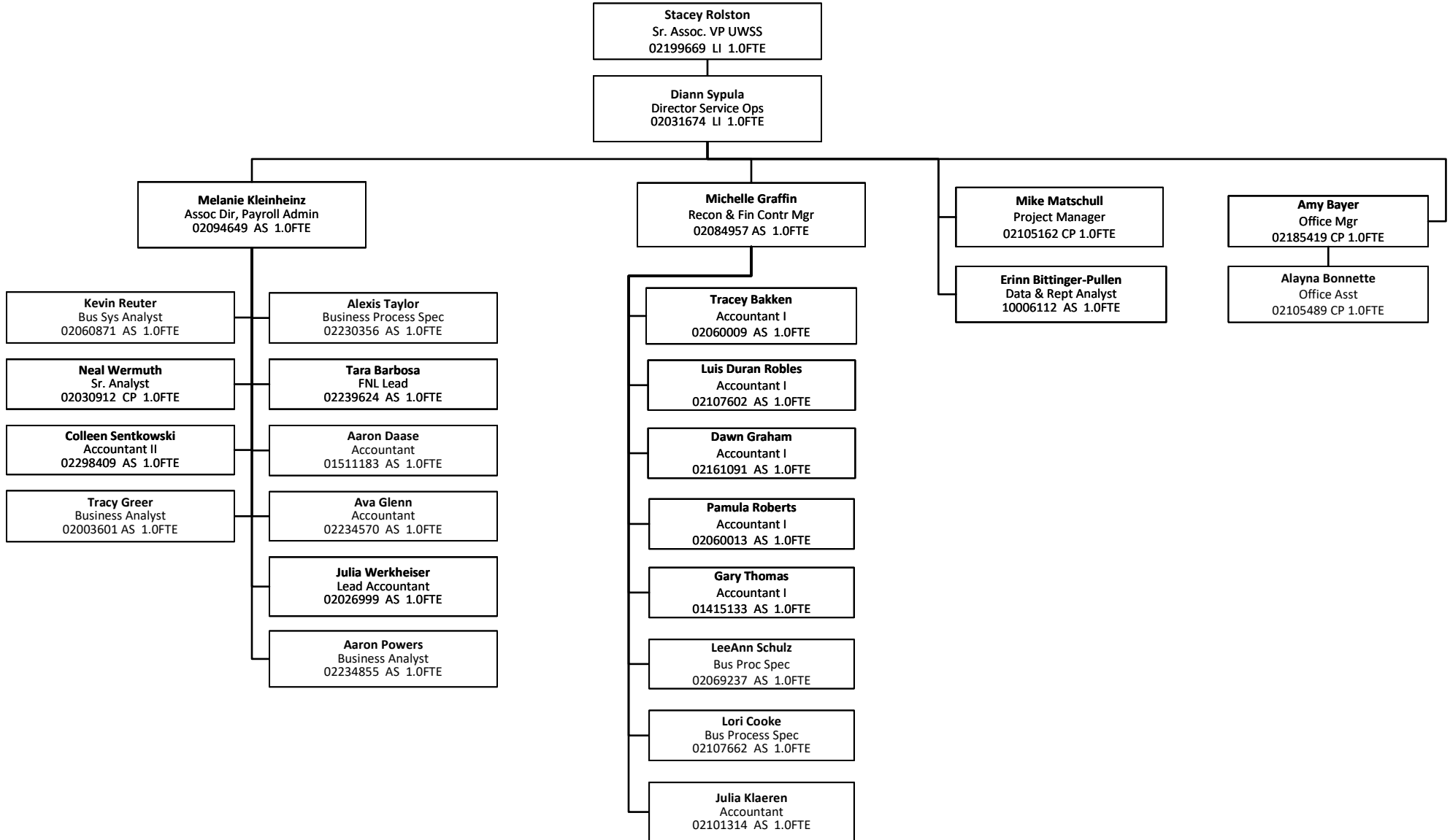


# Universities of Wisconsin

## Finance & Administration – UW Shared Services – Business Services

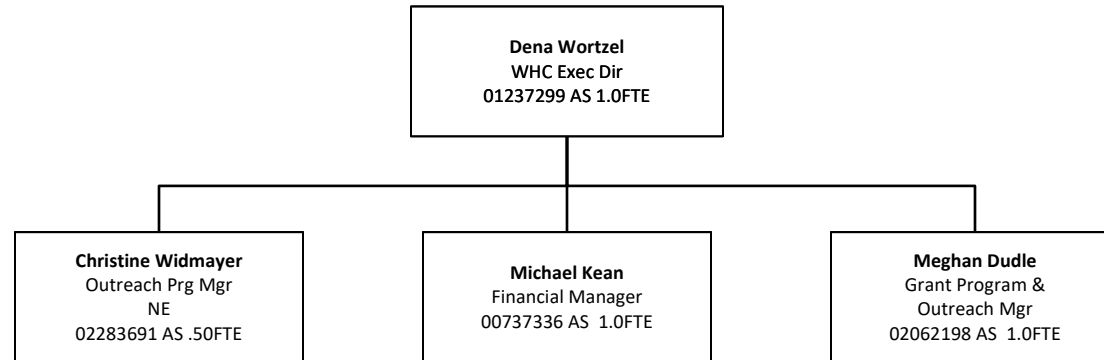


*Finance & Administration – UW Shared Services – Service Operations – Core Processing & Applications Support*

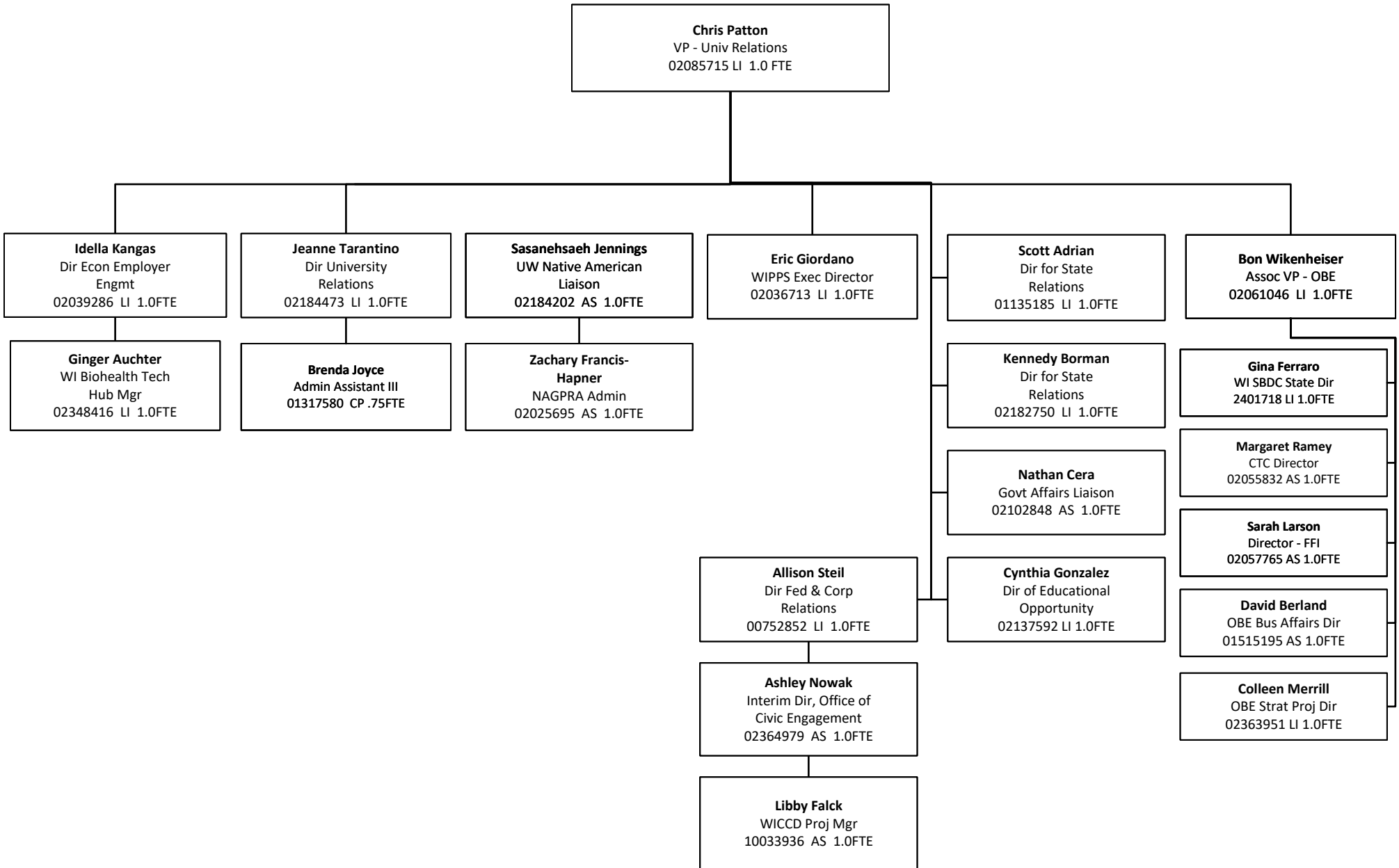


# Universities of Wisconsin

*WI Humanities Council (administratively attached to Finance & Administration Division)*

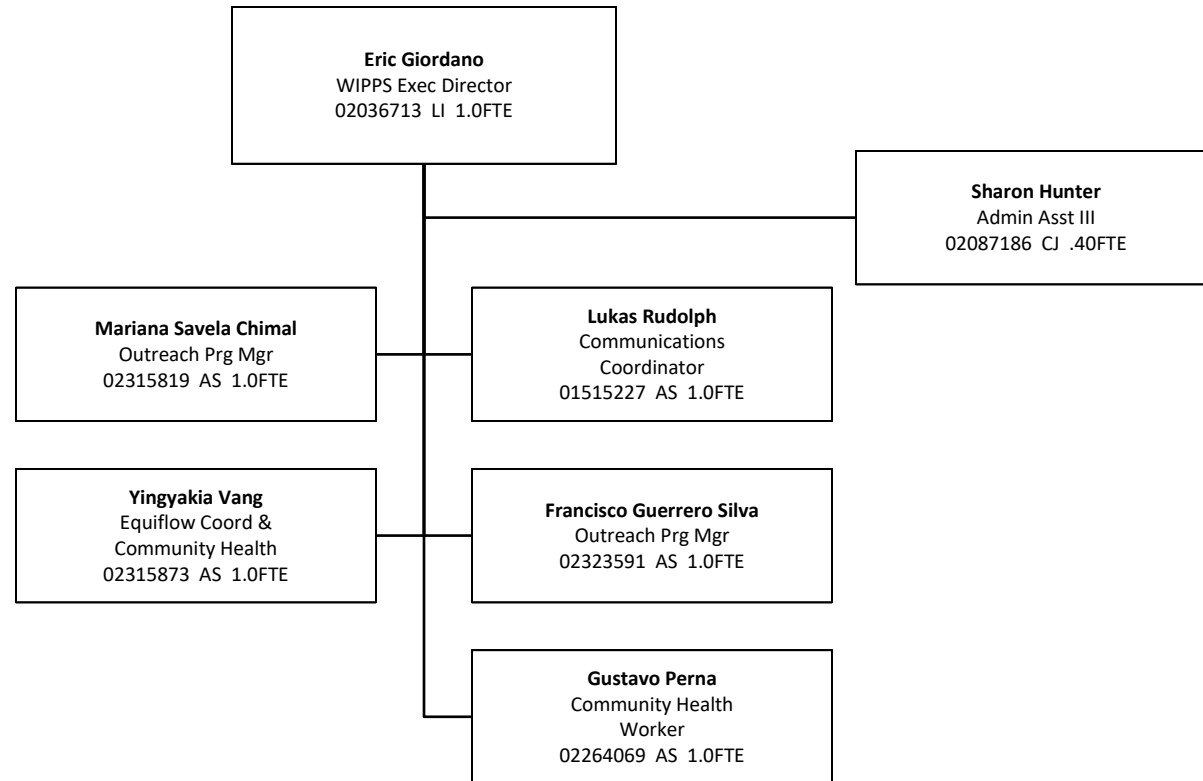


## Division of University Relations



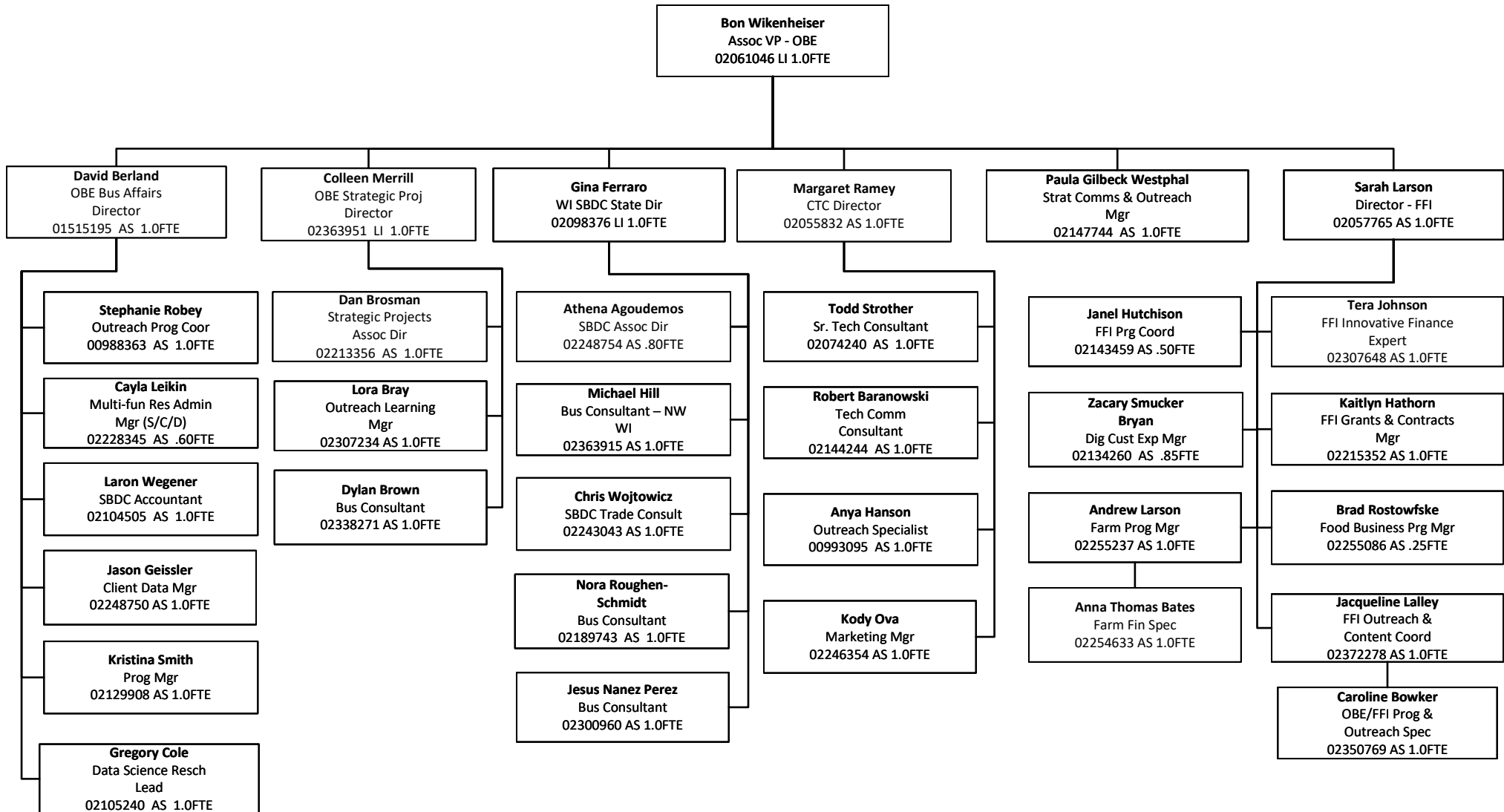
# Universities of Wisconsin

## *Wisconsin Institute for Public Policy and Service (WIPPS)*



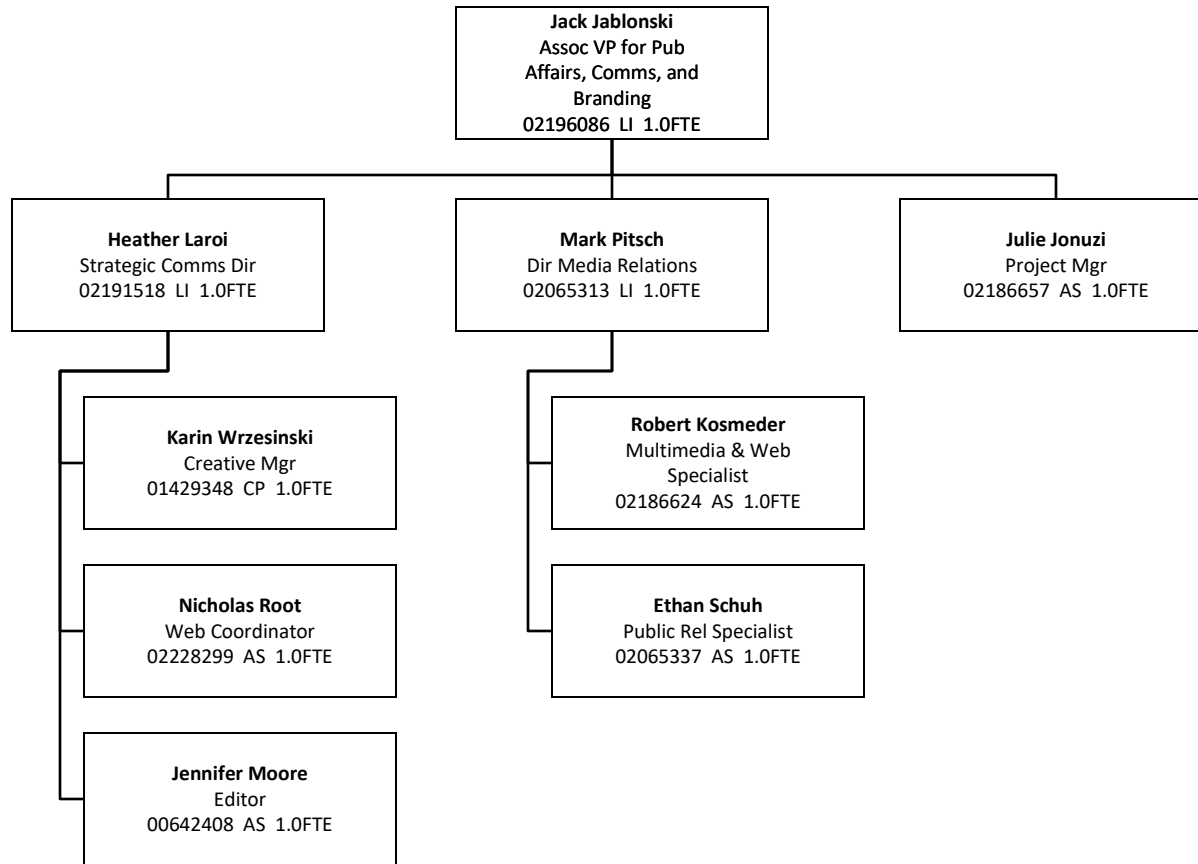
# Universities of Wisconsin

## University Relations – Office of Business & Entrepreneurship



# Universities of Wisconsin

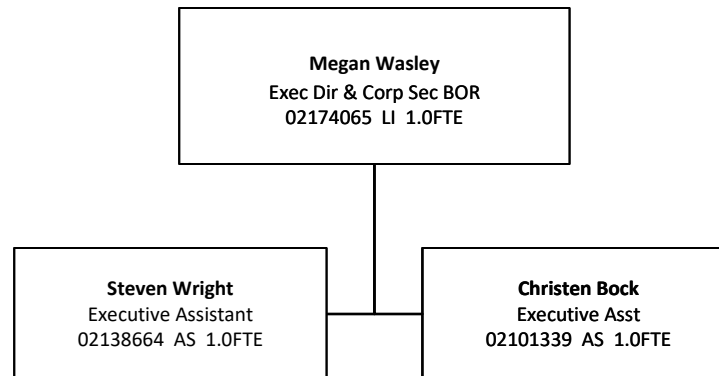
## *Office of Public Affairs, Communications, and Branding*





# Universities of Wisconsin

## *Office of the Board of Regents*





# Universities of Wisconsin

## *Wisconsin Intercollegiate Athletic Conference*

